



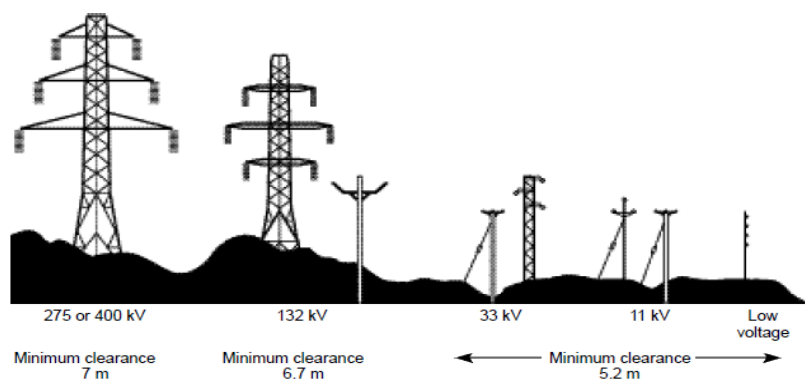
SUBJECT: Overhead Power Lines

RECIPIENTS: All Council Services (including schools)

ISSUE DATE: REF:

April 2011

HSB5



A School was recent prosecution after three of its employees suffered electrical burns while setting up a rugby post in one of the school's sports fields.

Four grounds men were working to put a rugby post into the ground. The post came into contact with a live 33,000 volt overhead power line and the men received electrical injuries, the workers suffer serious burns that required skin grafts, time off work to recuperate and are very lucky to be alive.

LCC have issued this Health & Safety Bulletin to remind managers, employees, contractors and any other personnel of the important of undertaking suitable and sufficient risk assessment prior to undertaking any work around/near or under overhead power lines.

Further Information can be found at -:

- [HSE Overhead power lines – Web Page](#)
- [HSE –FAQ's](#)
- [GS 6 – Avoidance of danger from overhead electrical power lines](#)
- [INDG389- Shock Horror, safe working near overhead power lines](#)
- [Agriculture information sheet 8 – Working safety near overhead power lines](#)
- [Electricity at work : Forestry & Agriculture](#)

If you require further assistance or clarification on the subject please contact:

Corporate Health & Safety or Your Mouchel Health & Safety Adviser(s)