

SEND Hub Update

Graduated Approach Briefing

November 2025



Information Overview

- A brief overview of what a Lincolnshire County Council SEND Mainstream Hub is
- A summary of the Core Offer
- Summary of the staffing structure for a Hub
- Details of current Hubs and those opening imminently
- Hubs expected to open in 2026/27
- Hub Eligibility Criteria
- Overview of the Training offer for Hub staff
- Allocations Process Overview

Mainstream SEND Hub Overview

- Mainstream SEND Units (SEND Hubs in Lincolnshire) are defined as:

“special provisions within a mainstream school where the children are taught within separate classes.”

- A SEND Hub is a small, adapted classroom within a mainstream school or academy that provides tailored support for children with special educational needs and disabilities (SEND). It provides a structured and supportive environment for pupils with an Education, Health and Care (EHC) plan whose needs cannot be fully met in a standard mainstream classroom.
- SEND Hubs enable children and young people with SEND to access a mainstream education and have their needs met in an environment with enhanced facilities, by knowledgeable and skilled staff.
- The ethos of the Unit is inclusion - children are supported to access mainstream activities and learning opportunities in the wider school environment, where appropriate. How much time a child spends in the hub as opposed to a mainstream class or activity will be dependent upon the child's needs and their response to inclusion opportunities.

Mainstream SEND Hub Core Offer

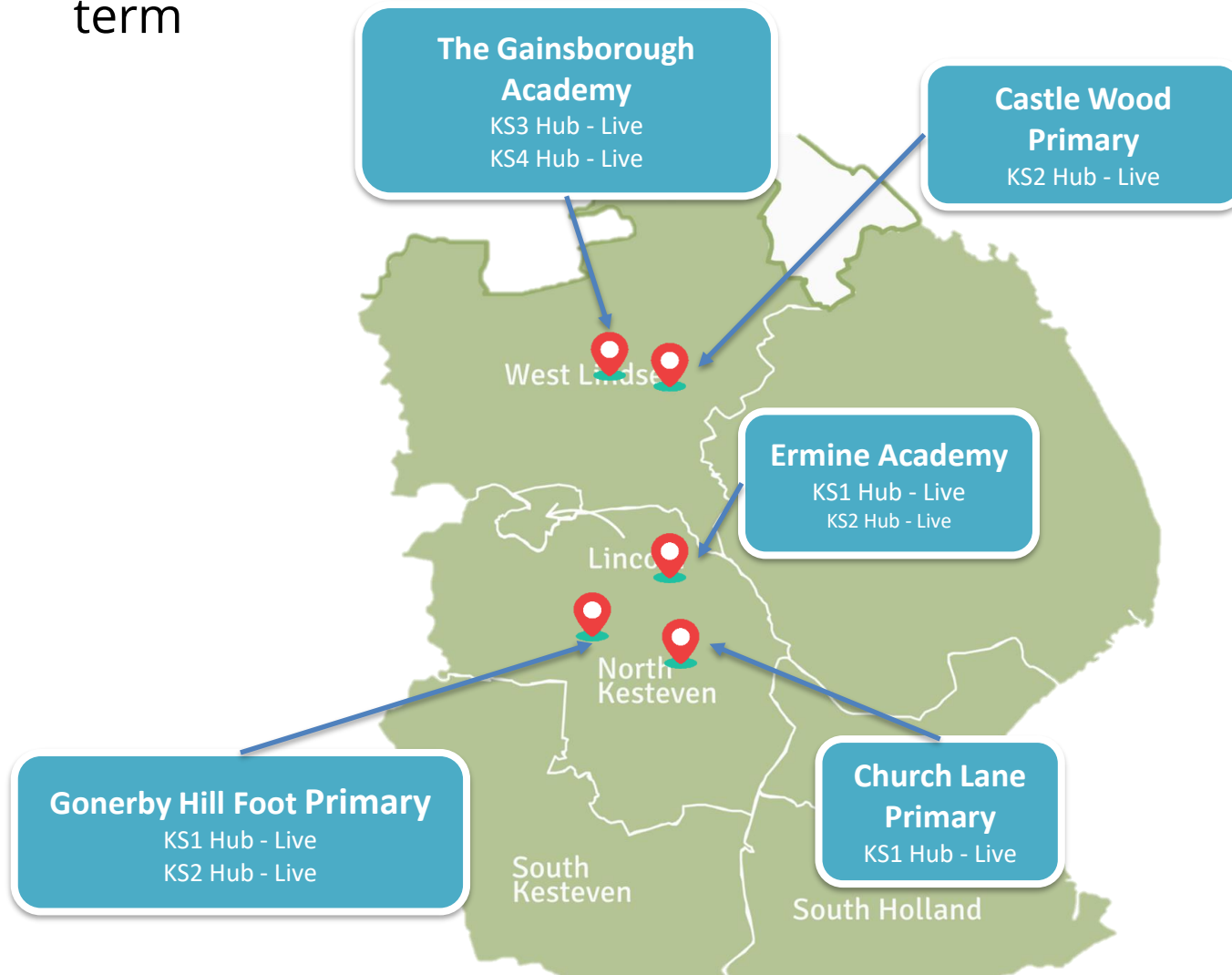
- An integral part of the mainstream school, physically and culturally, with inclusivity and belonging at its core.
- On the roll of the host school – your pupil, your community!
- Belongs to the school, be managed by the school and be staffed by the school – the LA's responsibility is to provide funding, support and to quality assure the provision.
- SEND Hubs offer:
 - Smaller class sizes
 - Specially trained staff
 - A nurturing, structured environment
 - Opportunities to access both mainstream and specialist learning
- **SEND hubs provide support through a mixture of:**
 - **Continuous Provision** - Sensory areas, quiet zones, and visual supports help children regulate and engage at their own pace.
 - **Small Group work** - A skilled adult supporting a small number of children, typically 2 to 5 - who have similar learning or developmental needs. It may include:
 - Focused teaching of communication, literacy, or numeracy
 - Social interaction and emotional regulation activities
 - Structured routines and shared tasks

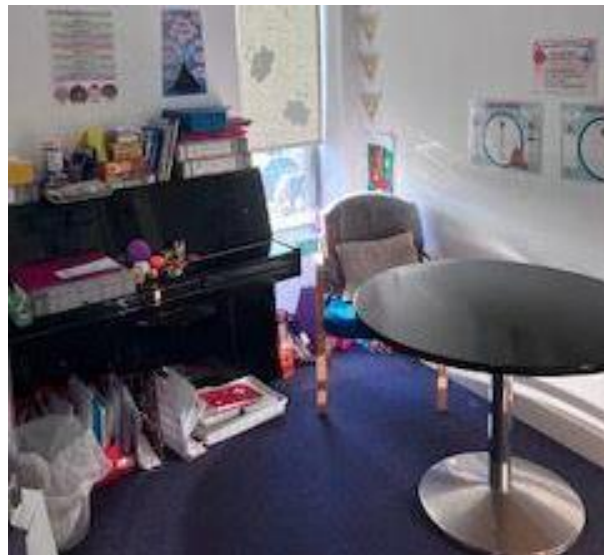
Mainstream SEND Hub Staff Structure

- Funding ensures the Hub can provide the following per Hub:
 - One Qualified Teacher
 - Two Teaching Assistants
 - One Intervention Worker (or funding to employ specialist interventions)
 - Enhanced Leadership Time
 - Enhanced SENDCo Time (additional half a day per week)
 - Additional Midday Supervisor
 - Ongoing Learning Resources
 - Staff funding at appropriate level for those with experience of teaching or supporting children and young people with SEND

Live Hubs – December 2025

- The first wave of SEND Hubs opened at the beginning of this term













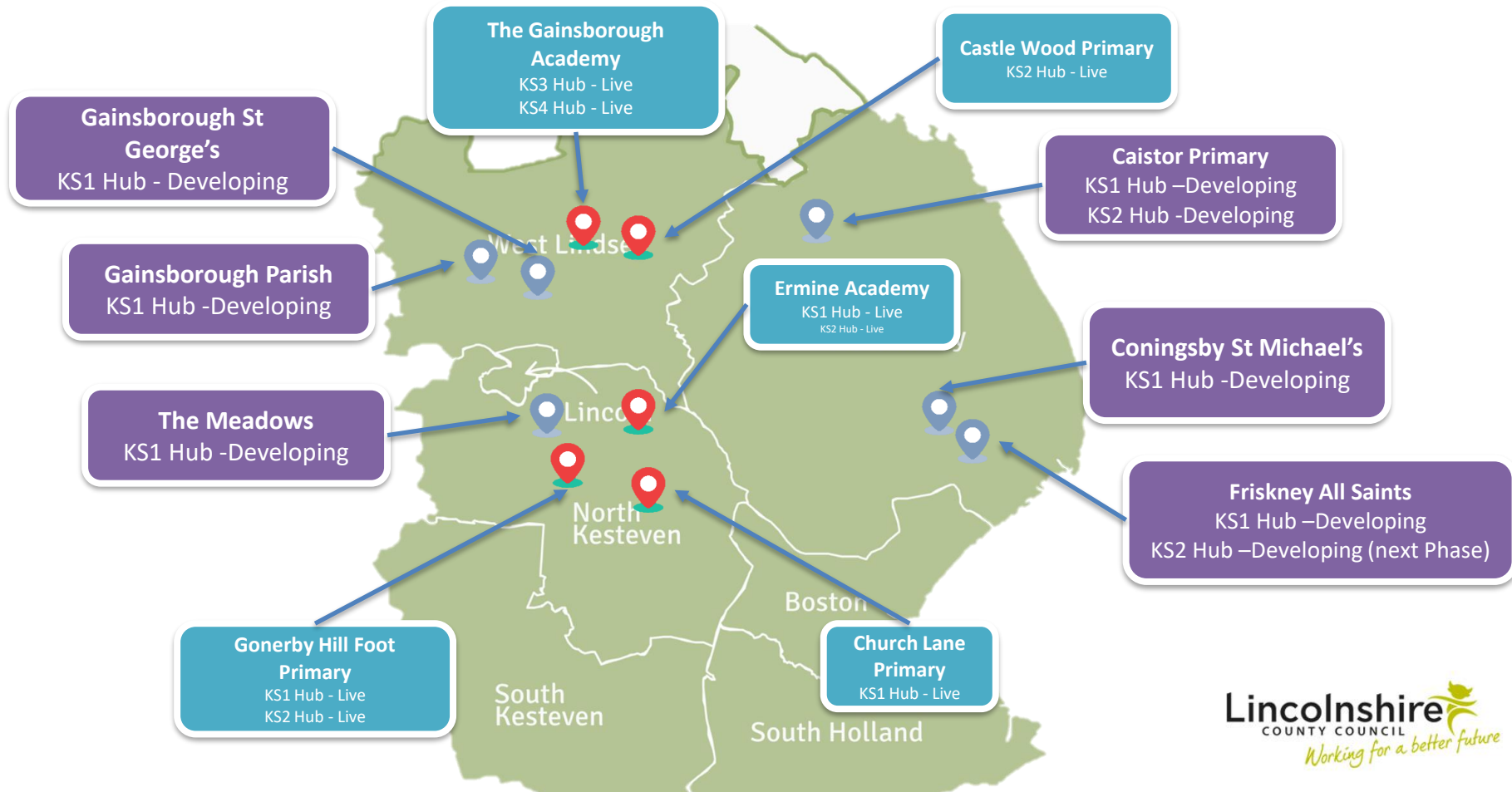
Harbour
Learning
Trust

Success and happiness for all



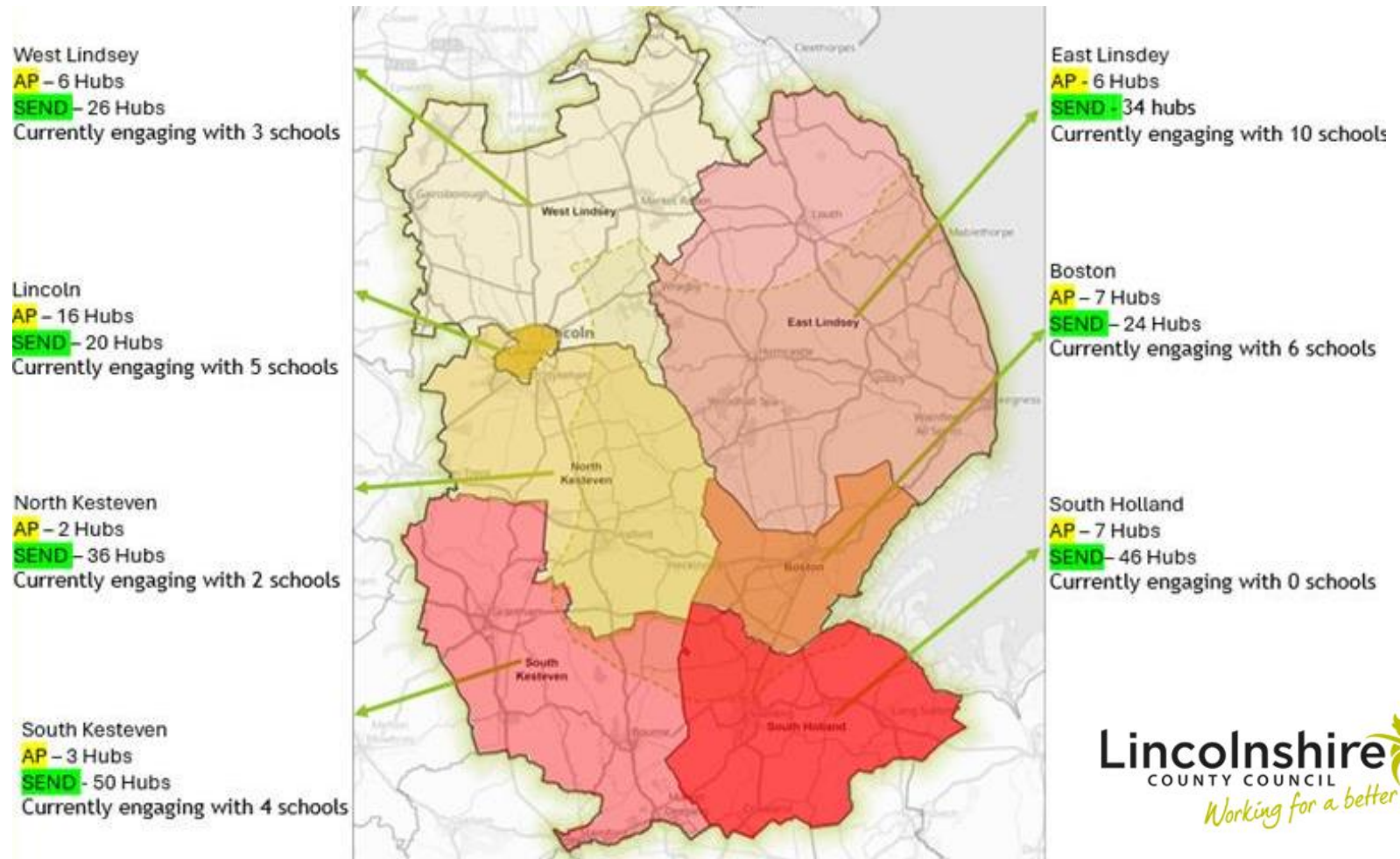
Hubs Under Development

- The second wave of SEND Hubs is currently under development and are due to open in the early part of 2026



Potential Hub Locations 2026-28

- 30+ sites are currently under consideration as part of Lincolnshire County Council's Better Belonging Strategy 2025



Lincolnshire County Council's Mainstream Hub Training Offer

- Fully funded training offer
- 8 full days of offsite training & development



Face to Face Training

- Creating an Inclusive Environment
- Fostering Belonging
- Unconditional Positive Regard
- Change Management
- Schemes of Delegation
- An SEMH Toolkit



Face to Face Training

- Vision and Policy Development
- The Core offer
- Six principles of effective Hub Provision
 - Children
 - Staffing
 - Environment
 - Curriculum
 - Access to Mainstream provision
 - Access to Specialist Support
- Self-Regulation and Co-Regulation



Face to Face Training

- Managing Transitions
- A Relational Approach
- Creating Inclusive Environments
- Models of Engagement
- Curriculum Impact Progression and Assessment
- Curriculum Enrichment
- Parental Engagement



Face to Face Training

- Using Assistive Technology
- Using Digital and AI
- Understanding Communication and Interaction
- Understanding Cognition and Learning
- Using Emotion Coaching



Update to Eligibility Criteria

1. Mainstream ECHP,
 - ECHP with Special stated can be considered (Band A & B Only)
 - This is to accommodate those children who were allocated 'Special' prior to the option of a SEND Hub being a possible route. Newer ECHPs considered may well suggest a Hub as suitable where appropriate
2. Primary Need – C&I or C&L or
 - Physical Disabilities can be considered where the physical disability leads to C&I or C&L difficulties such as Down's syndrome. This would *not* include those with accessibility difficulties or complex medical needs
3. Same Key stage as current hub pupils
4. Maximum of 30 mins travel (flexibility allowed)
5. No primary SEMH Need and behavioural needs as a result of C&L or C&I only.
6. Present setting has taken all reasonable steps to meet need
7. Working at a whole Key Stage below their chronological peers.
8. Evidence to indicate that with intensive support the child can develop strategies and skills to cope and manage everyday sensory demands of larger mainstream classroom.
9. The placement will support the efficient education of other children and the efficient use of resources.

Allocations Process

- Panel called
 - Redacted ECHPs and Pen Portrait sent to school - 15 in advance
 - School visits arrange with the current setting to observe
- Panel meets for case discussions
- Where the panel are in agreement
 - Hub is named for accepted consults
- Where the panel are not in agreement
 - Joint observations with Hub staff and LCC staff where consult is declined
 - Panel meets again to discuss previous declines
 - Decision reached