



MELSA

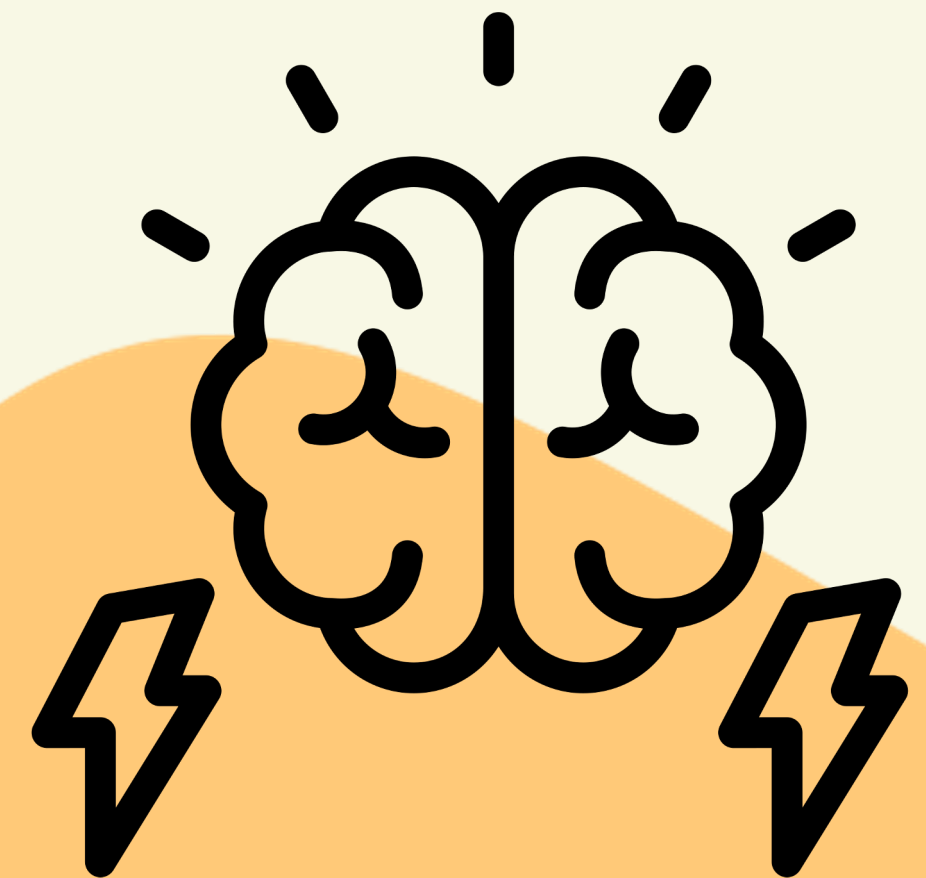
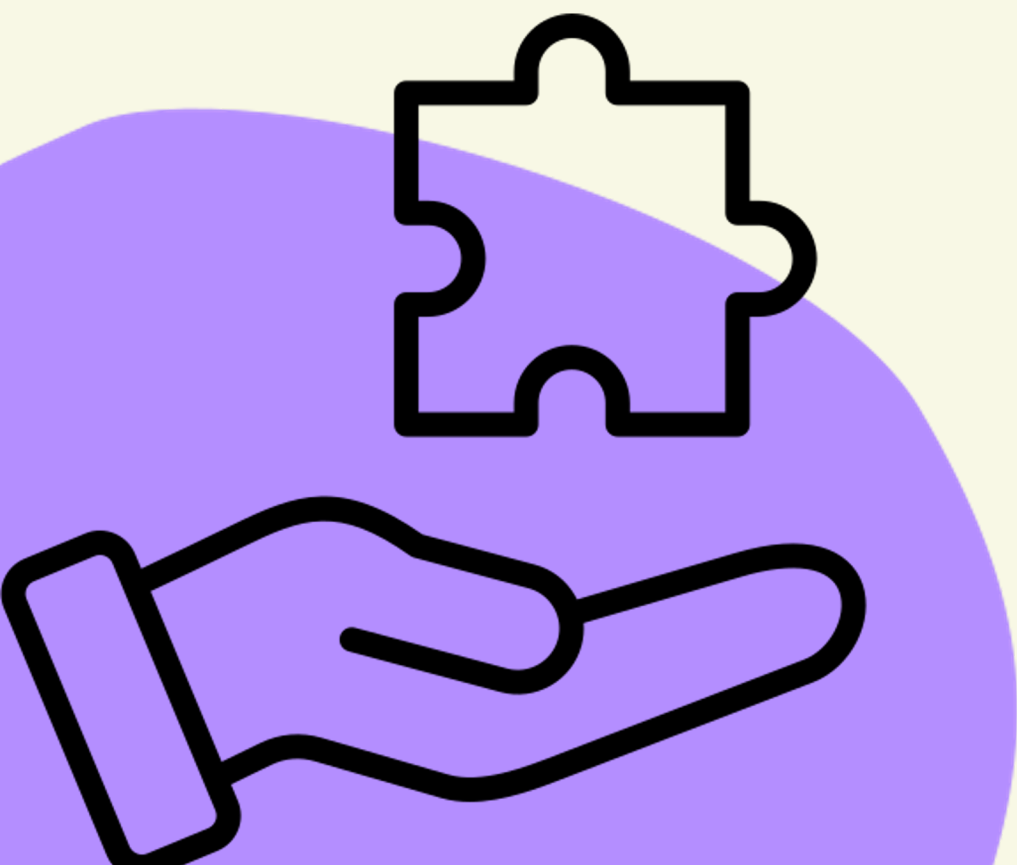
Mediated Learning Support Approach /

Assistant

Dr Lise Griffiths & Dr Gemma Slack



Lincolnshire
Psychology
Services



ARE YOU EXPERIENCING...

- Children not coping with classwork demand?
- Too much time spent in interventions outside class?
- Not enough staff for interventions?
- Underperforming in assessments / GCSE results?
- Children over-reliant on staff support?
- Staff lacking confidence to personalise & adapt learning?
- Support staff doing too much for the child?
- Low independence from child?



Key Content

Teaching adults how to **grow the following skills & processes** in learners

- Independence
- Confidence
- Self-efficacy
- Motivation
- Strategy

Teaching adults about the **nature of learning** so they can best **maximise learning**:

- Executive functioning & memory
- The link between emotions & learning
- The importance of growth mindset



Mediating
Growth mindset

DAY 1
01

DAY 2
02

Thinking about thinking



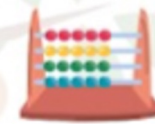
Recall and memory

DAY 3
03



DAY 4
04

Psychology of
learning maths



Psychology of learning
to read and write

DAY 5
05



DAY 6
06

Reviewing learning
Making Action Plans
Starting supervision

£695
per
person

6 DAYS TRAINING WITH A
QUALIFIED EDUCATIONAL
PSYCHOLOGIST

4 INCLUDED
SUPERVISION SESSIONS
WITH EP ALSO



Dr Mary Stanley-Duke (Bristol City Council)

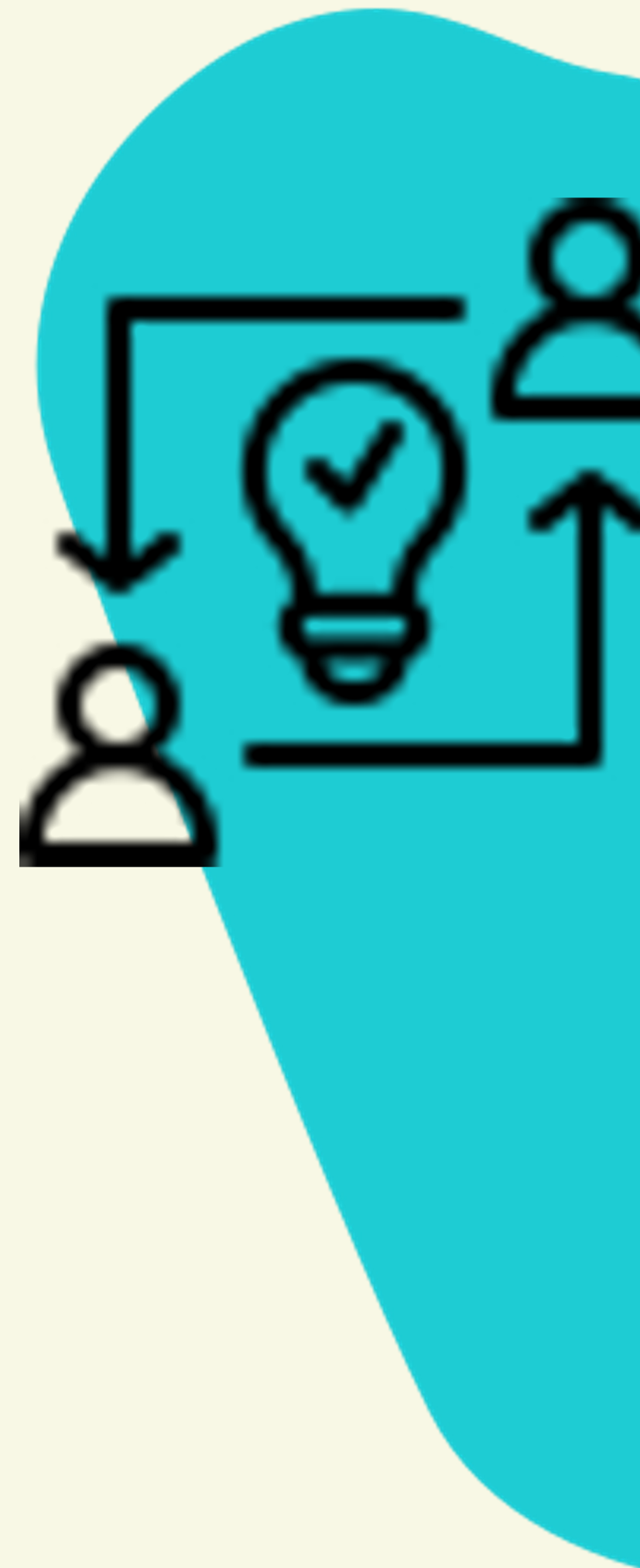
Roles & Applications in School

Approach

- Staff liaison & sharing best practice / peer support
- New teacher mentoring
- Problem solving with key staff and advising them
- Organisational problem solving (e.g. homework)
- Oversight and target setting for identified children

Assistant

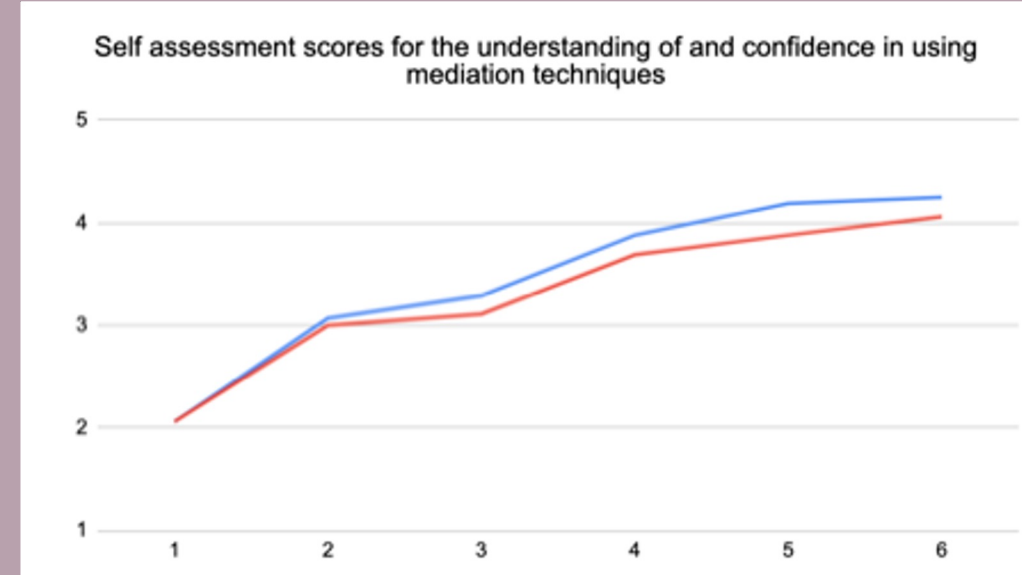
- Individual work with young people
- Planning teaching & learning for specific children,



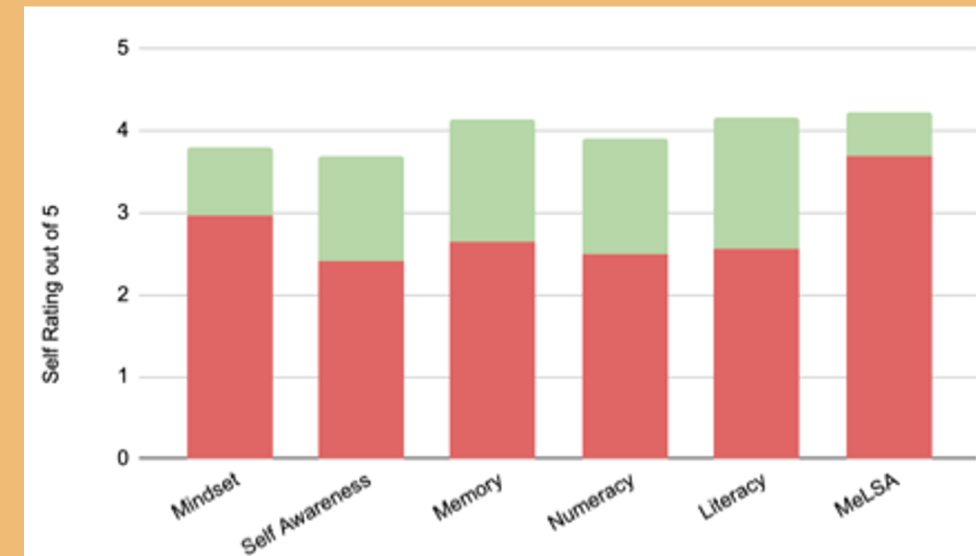
Our Research Findings so Far...



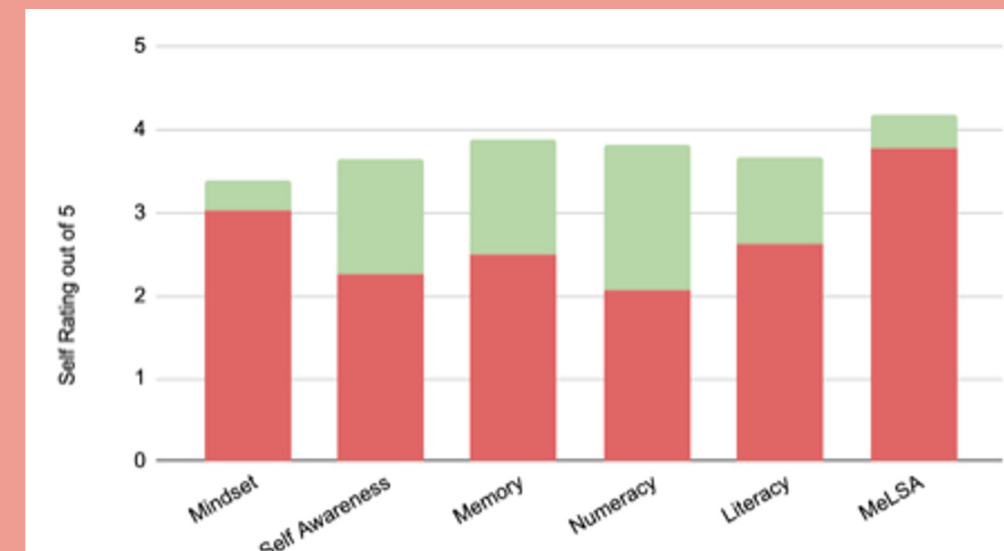
COMBINED SELF-RATED CONFIDENCE IN USING MEDIATION TECHNIQUES



COMBINED SELF-RATED UNDERSTANDING IN EACH CORE TOPIC



COMBINED SELF-RATED CONFIDENCE IN EACH CORE TOPIC



Practical Info

- £695 with lunch included (6 full days training from an EP, 4 follow up supervision sessions with an EP)
- Earlybird discount for bookings before April 19th with £100 discounted, at £595
- End of September 2024 (course delivery)
- Venue to be confirmed, likely to be central / Lincoln area
- Continued supervision required to maintain MeLSA accreditation
- Opportunity to become involved in doctoral research on MeLSA impact



THANK YOU!

Dr Mary Stanley-Duke's video 'what is MeLSA?'

<https://www.youtube.com/watch?v=TEvn8DQYPfA>

To book your place, contact Harriet Hall at

Harriet@lincolnshirepsychologyservices.com

