



# IDL

INTERNATIONAL DYSLEXIA LEARNING  
SOLUTIONS LIMITED

## A Teacher's Guide



## An introduction

International Dyslexia Learning (IDL) provides specialist multi-sensory software to primary and secondary schools in the UK and around the world.

Our main goal is to provide learning support to those most in need and our software is used by thousands of learners across the globe. IDL was developed to support the growing number of young people who are falling through the gaps in Literacy and Numeracy.

**IDL Literacy** has been around for over 40 years and dramatically increases reading and spelling ages for those with dyslexia or low literacy ability. In addition, research has shown it also has a hugely positive impact on the confidence and self-esteem of those using the programme.

**IDL Numeracy** has been designed for children with dyscalculia, those struggling with Maths or who are experiencing maths anxiety. It includes a fully graded course to support the National Curriculum for Numeracy, with interactive activities to support pupils and help them progress.

Our new **IDL Wellbeing** programme has been developed to support pupils aged 7-13 to build the skills needed to achieve and maintain good mental wellbeing such as emotional awareness and mindfulness.



What  
we  
believe  
in

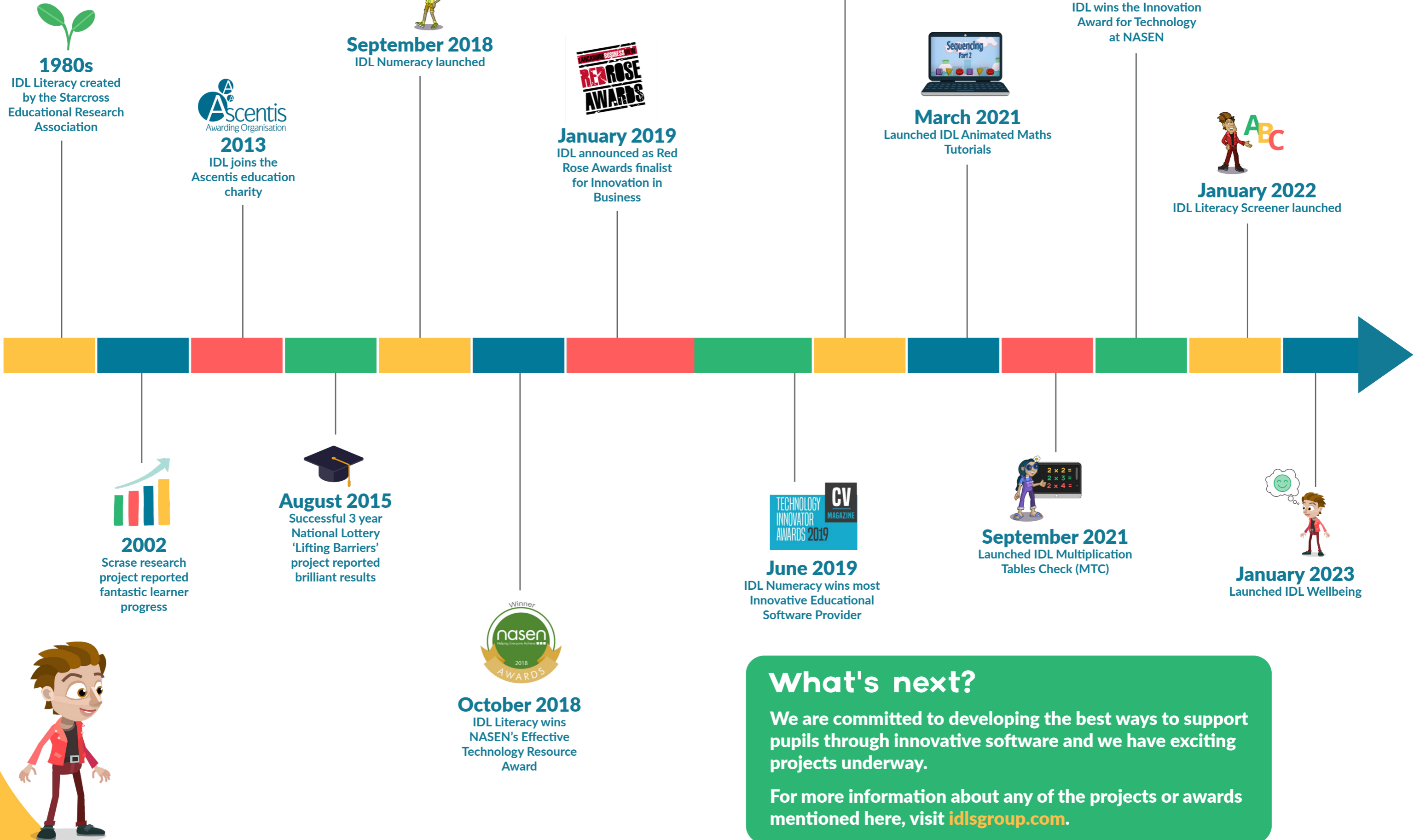
Our vision

Creating life  
changing  
opportunities for  
all

Our mission

To enable learning  
through innovative  
education and  
exceptional  
customer service

# Our journey so far...



**1980s**  
IDL Literacy created by the Starcross Educational Research Association

**2013**  
IDL joins the Ascentis education charity

**September 2018**  
IDL Numeracy launched

**January 2019**  
IDL announced as Red Rose Awards finalist for Innovation in Business

**August 2020**  
IDL Numeracy Screener launched

**March 2021**  
Launched IDL Animated Maths Tutorials

**October 2021**  
IDL wins the Innovation Award for Technology at NASEN

**January 2022**  
IDL Literacy Screener launched

**2002**  
Scrase research project reported fantastic learner progress

**August 2015**  
Successful 3 year National Lottery 'Lifting Barriers' project reported brilliant results

**October 2018**  
IDL Literacy wins NASEN's Effective Technology Resource Award

**June 2019**  
IDL Numeracy wins most Innovative Educational Software Provider

**September 2021**  
Launched IDL Multiplication Tables Check (MTC)

**January 2023**  
Launched IDL Wellbeing



## What's next?

We are committed to developing the best ways to support pupils through innovative software and we have exciting projects underway.

For more information about any of the projects or awards mentioned here, visit [idsgroup.com](https://idsgroup.com).



# What to expect from IDL

- ✓ Award-winning literacy and numeracy software trusted by thousands of schools around the world
- ✓ An unlimited user licence to use with as many learners and on as many devices as you wish
- ✓ Apps designed for iPads and tablets so you can use IDL on any device with an internet connection from any location
- ✓ A user-friendly interface that allows you to automate lesson plans and see pupil progress at the touch of a button
- ✓ The ability for pupils to work independently with minimal supervision
- ✓ Free CPD Certified training events throughout the year covering topics such as dyslexia, dyscalculia, mental toughness and wellbeing
- ✓ Touch typing and subject-specific spelling exercises – perfect for homework or exam practice
- ✓ Downloadable certificates to reward pupil progress
- ✓ Progress reporting and graphs to show individual and class improvement
- ✓ Portfolio of resources to provide extra support, including Animated Maths Tutorials, Literacy & Numeracy Screening and Times Tables Practice
- ✓ Specialist IDL training webinars to ensure you are getting the most out of the programme
- ✓ Dedicated technical support team and customer service advisors on hand to help

All of the above is included as part of your IDL package

## Measuring success

Monitoring learner progress couldn't be easier. There are various ways to track progression, all of which are presented in one easy-to-navigate interface. For both individual learners and group classes you can view progress in a chart, graph, spreadsheet or in a report format – all of which can be exported.

### Individual progress

IDL provides a unique way to monitor individual learner progress. Along with being able to track progress against expected levels, you can identify and pinpoint areas of strength and weakness. This allows facilitators to reward progress and focus on any areas of difficulty.

Learners particularly enjoy receiving a certificate of achievement as they feel rewarded for their progress and it motivates them to further succeed in the programme.



### Class groups

Monitoring the performance of classes is straightforward. You can create your own list of groups to reflect how pupils are organised in school, allowing you to view class progress at a glance.



### Ofsted

Schools often feedback that Ofsted are particularly impressed by the individual and class progress graphs. The graphs show improvements over time and are a great way to measure and evidence the success of IDL.



## IDL has been developed around five basic principles:

### 1. Multi-sensory lessons

IDL uses sight, sound, touch, and voice to improve literacy and mathematical ability. Links are made between the visual, auditory and tactile pathways.

### 2. Progress monitoring

Teachers can see how pupils are achieving against expected standards for their age group along with identifying areas they are struggling with.

### 3. Simple to use

IDL is easily accessible for both students and teachers. Students can work independently or with minimal supervision, whilst teachers can track and monitor progress effortlessly.

### 4. Independent learning

Students can work independently, allowing for larger intervention groups. Student progress is saved online so they can work from any location - picking up where they left off.

### 5. Available anywhere

Pupils can use IDL from school or at home, on a computer or tablet. The cloud is used to store pupil progress so they can pick up where they left off.

## For teachers and teaching staff

At some point you may have thought

*"Can I make a real positive difference to a student's English and maths skills in the limited time I have with them?"*

We know the answer is usually "Yes" but the challenge is "How?"

The IDL platform has been designed to satisfy this challenge, with proven results and a simple interface that allows you to automate lesson plans and see student progress at the touch of a button. This is why IDL is trusted by thousands of teachers around the world.

*“ We are very pleased with our new IDL software. The pupils are enjoying it and its simplicity of admin management is very welcome! It is a very useful addition to our support. ”*

Mrs Reese - St Mary's Hall Stonyhurst





# IDL Literacy

IDL Literacy is an intervention software proven to deliver highly effective support for those with dyslexia or lower-level literacy ability. The success of the programme has been demonstrated in schools and tuition centres around the UK and overseas for over 40 years.

Our schools report increases in reading and spelling ages of up to two years, with an average increase of 11 months after only 26 hours of use. One of the most notable improvements is in student self-confidence, as their new skills are transferred to their classes and other areas of school life.

**11 months  
improvement in  
spelling and reading  
ages after 26 hours  
of use\***

\*Based on the Lifting Barriers project. Visit [www.idlsgroup.com](http://www.idlsgroup.com) to see the full study.

## How does IDL Literacy work?

Following an individual assessment, pupils are provided with literacy lessons appropriate for their ability. Lessons are completed by reading and typing the words or sentences on screen. Finally, pupils hear the text back in their own voice to aid retention and fluency.

Teachers can easily monitor progress and see how pupils are achieving against expected standards for their age group along with identifying areas they are struggling with most.

*“The increase in reading and spelling ability with our children is noticeable and within a relatively short period. However, the greatest benefit has to be the growing confidence, self-esteem and their enthusiasm for learning - I believe the IDL programme is a complete winner. Long awaited for!”*

Kairen Jones, Hambleton Primary Academy





## IDL Numeracy

IDL Numeracy has been developed to help learners with dyscalculia and lower-level maths ability. It includes a fully graded course to support the numeracy curriculum at primary level in England and Scotland. In order to be inclusive, the lessons are designed to reduce the stress those with dyscalculia would ordinarily feel when faced with mathematical problems.

IDL Numeracy can also be used to support pupils making the move from primary to secondary school who may be struggling with maths.

“Our school was privileged to have an early insight into the IDL Numeracy, our students have engaged successfully with its approach and we saw immediate progress being made. We thank everyone who has supported us, to support our students.”

Deputy Headteacher, Etz Chaim Boys School

## How does IDL Numeracy work?

Following an initial online assessment, pupils are provided with maths problems suited to their ability. Lessons are designed to be fun and engaging and are completed by clicking or moving items on screen to solve the problem.

Each IDL Numeracy lesson is based on one or more of our 11 curricular strands:

- Numbers and counting
- Addition and subtraction
- Multiplication and division
- Fractions
- Weights and measures
- Money
- Time
- Shapes, position and direction
- Sequences and patterns
- Statistics, sorting and charts
- Place value

Lessons are categorised in this way to help you identify which areas a pupil may be struggling with so you can target areas of improvement.

As IDL Numeracy covers all aspects of the National Curriculum for numeracy in KS1 and KS2, the lessons cover a vast array of topics including size, 2D and 3D shapes, weights, measures, spatial awareness, time and money.





# IDL Wellbeing

IDL Wellbeing is an exciting new product designed to integrate with a whole-school approach to mental health, behaviour management and mental toughness.

Following two years of development alongside a psychologist, IDL Wellbeing has been developed using contemporary theories and mindfulness practices. Studies have proven that teaching resilience and emotional literacy can reduce incidents of poor mental health later.

IDL Wellbeing adopts an integrated approach to support children, aged 7 -13, to understand and address unwelcome emotions as well as encourage positive ones.

## How does IDL Wellbeing work?

IDL Wellbeing is designed to fit alongside your whole school approach and is targeted towards preventing poor mental health and building mental toughness by helping pupils with the following skills for life:

- Learning emotional awareness
- Positive affirmation
- Dealing with worries
- Goals and positive behaviour
- Practising gratitude
- Mindfulness

“We have had a small group accessing the wellbeing programme and some of them have absolutely loved it. We have overheard comments such as, “That’s me, they are describing how I feel” and “This is helping me understand how I feel and what to do”. We love the goals that children set themselves and how we can access the worries/concerns that they choose - it really helps us to better understand pupils’ needs when they don’t want to engage with us directly.”

SENCo, St Annes





## Included in your IDL school licence...

### IDL Numeracy Screener

The Numeracy Screener helps identify areas in which a pupil might struggle and any signs of dyscalculic tendencies. It can be used to screen an entire year group, or individual pupils who are showing signs of maths anxiety or particular maths difficulties.

Based on research carried out by dyscalculia experts such as Professor Brian Butterworth, Patricia Babbie and Jane Emerson, the screener tests auditory and visual memory and stroop numbers to gauge a pupil's comprehension of value.

The screener results are instantly available, enabling you to identify areas of strength or weakness. The results will indicate which particular maths principles a student is struggling with and therefore assist with individual assessment, further intervention and lesson planning.

### IDL Literacy Screener

The IDL Literacy Screener is a simple, effective online tool that can be used to highlight dyslexic-type difficulties. It can be used with groups and individuals where there may be a concern about their literacy progress.

Early identification of difficulties is vital for appropriate and targeted support. This test is incredibly easy to administer, with only one teacher or teaching assistant invigilating a whole class. Results can then be interpreted by class teachers and SENCOs who will find them invaluable for developing appropriate interventions.



### Animated Maths Tutorials

This series of tutorial videos has been designed to support pupils in solving maths problems independently and can be used in conjunction with IDL Numeracy. Developed in consultation with educational specialists including Judy Hornigold, the animations cover topics such as counting, fractions and 3D shapes. They can also be used by teachers as a whole-class teaching tool!

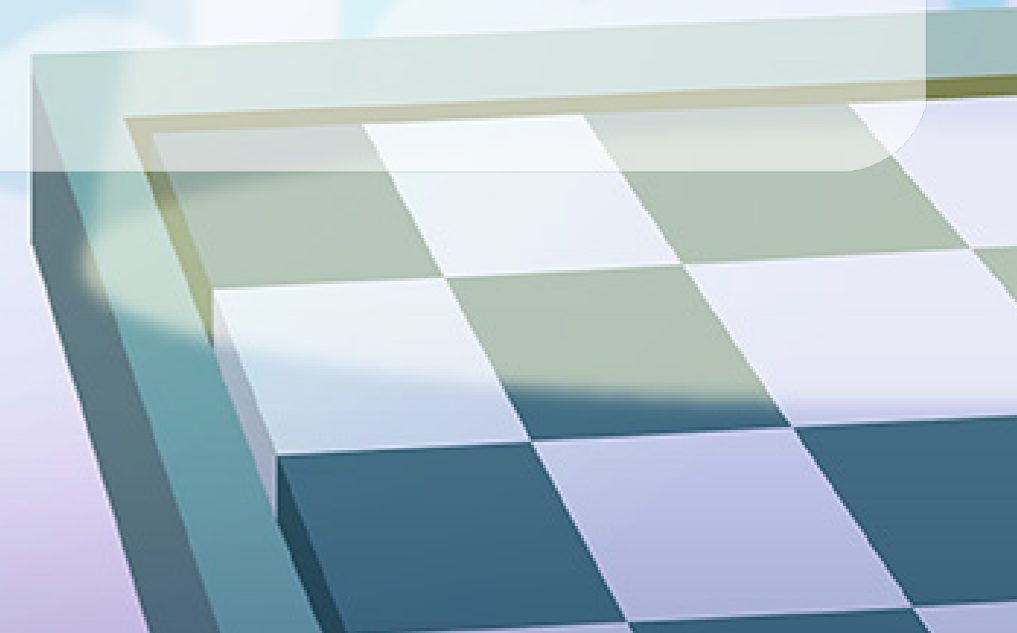
To accompany IDL Numeracy, the IDL Animation and Activity Guide contains a range of activities that students can enjoy whilst working through the programme. These are designed to support lessons and expand on strategies taught.

### Multiplication Tables Check

This revision tool prepares learners for the mandatory Multiplication Table Check (MTC), which is now statutory for all Year 4 pupils in England. The IDL MTC has been designed in line with the national curriculum, enabling pupils to practise their times tables in advance of taking the government test. This allows you to identify pupils who have not yet mastered their times tables, so that additional support can be provided.

### Spelling & Touch-Typing Exercises

The spelling book contains 120+ subject-specific spelling activities, designed to allow pupils to practice spellings from a range of areas including science, P.E, geography, history and more. The typing book contains activities designed to improve keyboard skills for your learners and is perfect for any pupils that may struggle locating the correct keys, which can often slow pupil progress down. These are both popular for homework tasks and as additional practice.



## Customer support

We have an experienced team on hand to help you. They can be reached by phone call, email and live chat through our website.

We take great pride in ensuring any issues raised are resolved to the highest standard as quickly as possible. There is a team of Technical Advisors, Software Developers and Finance Advisors who are on hand to get to the root cause of any problems raised.

We provide free online trainings sessions to help you get the most out of IDL. Sessions can be joined by simply clicking a link within your School Web Application, no need to register!

## Get started with IDL

The first step is to get in touch using the contact details below. You can request a free trial or demonstration via our website or give us a call to find out more.

### Get in touch:

Phone: 01524 580 665  
Email: [hello@idlsgroup.com](mailto:hello@idlsgroup.com)  
Website: [www.idlsgroup.com](http://www.idlsgroup.com)

Scan here to request a free school trial today!



# Accreditations

## Awards

We are delighted to have been recognised for our software through these recent awards.



Teach Primary Maths Award



BETT Awards 2021 Special Education Needs Solutions



Finalist for Innovation for Business Awards



GESS Education Award Finalist



Innovation Award for Technology

## Partners

We have some fantastic partners with shared visions to our own.



British Assistive Technology Association



Continuing Professional Development



International Dyslexia Association



British Dyslexia Association



National Literacy Trust



Cyber Essentials



Her Majesty The Queen: The Official Jubilee Pageant Commemorative Album

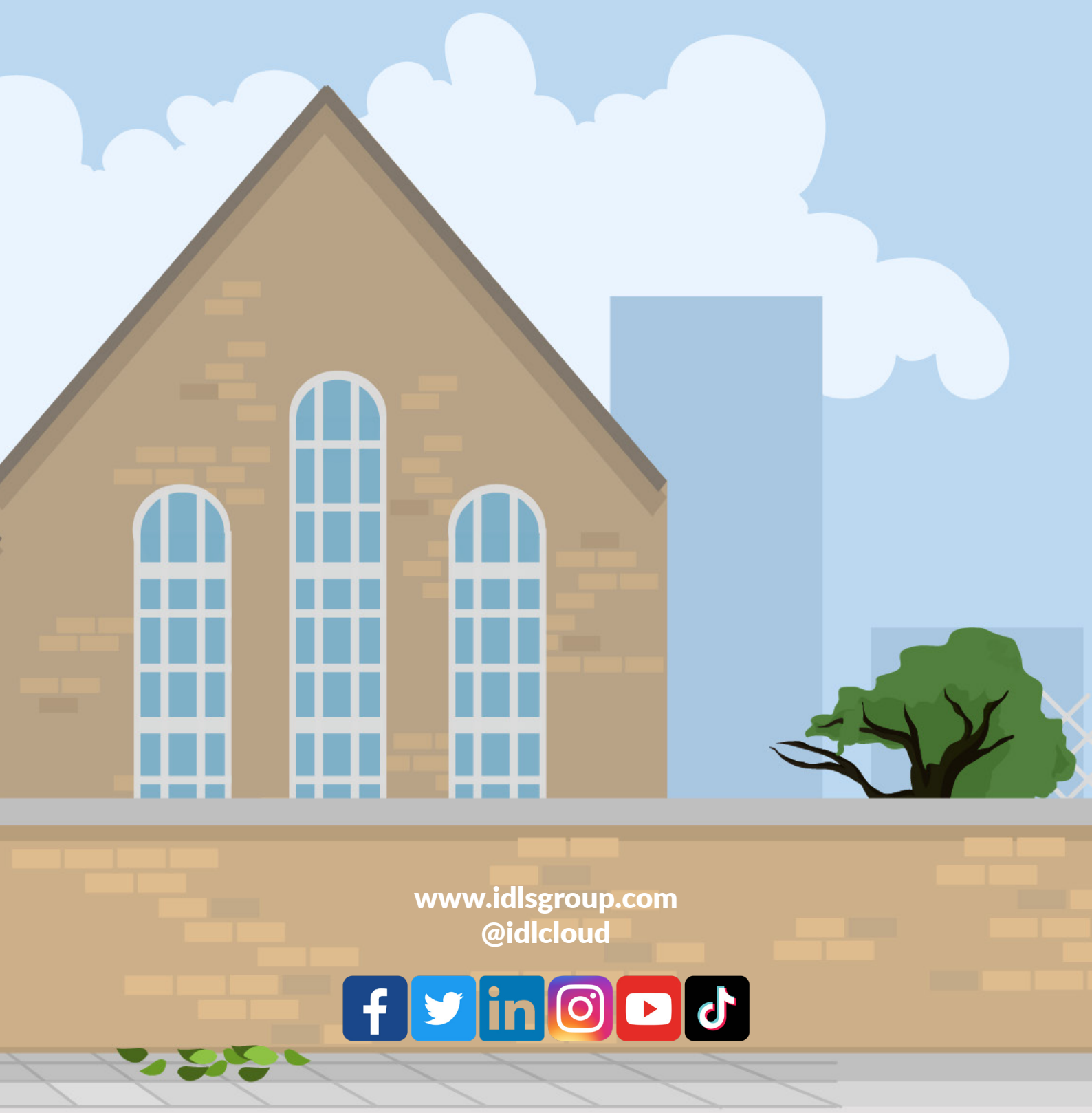


ISTE International Society for Technology in Education, Solutions Partner



“ The IDL programme has had a fantastic impact, not only academically but socially and emotionally. ”

Lucy Whitehead, St Andrew's C of E Primary School, Ashton



[www.idlsgroup.com](http://www.idlsgroup.com)  
[@idlcloud](https://www.instagram.com/idlcloud)

