

LET'S TALK RUBBISH



WHY DOES RUBBISH MATTER?



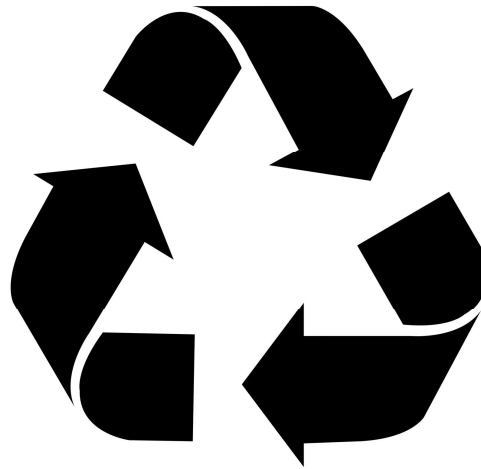
Energy saving



THE THREE R'S



Reduce the amount of rubbish you throw away



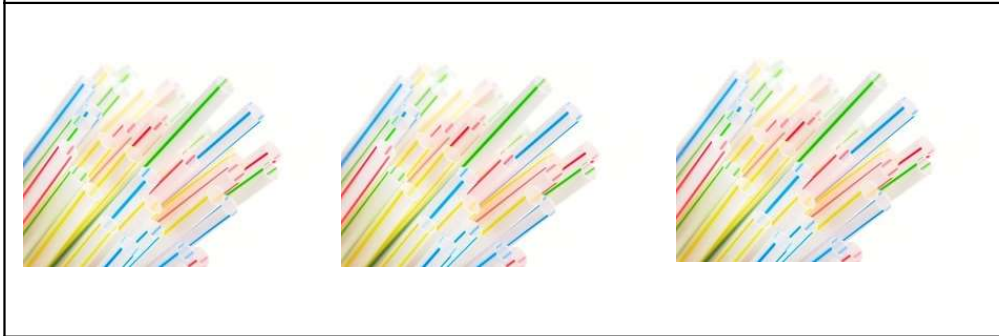
Reuse things you buy and own



Processing materials so that it can be used again



Reduce the amount of rubbish you throw away





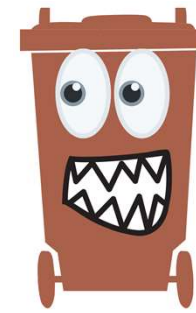
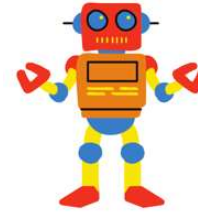
**Reuse things
you buy and
own**



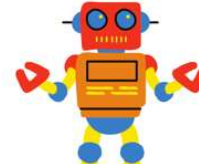


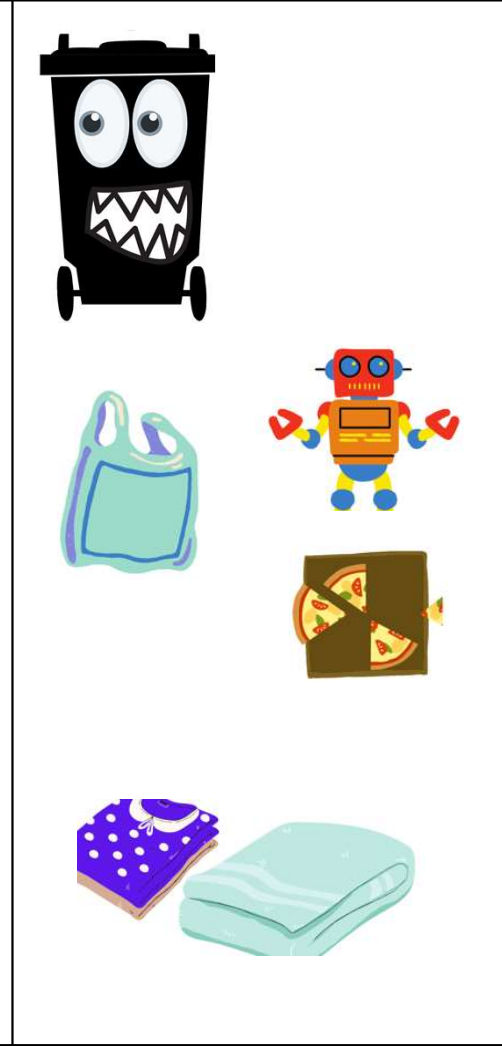
**Processing materials
so that it can be used
again**

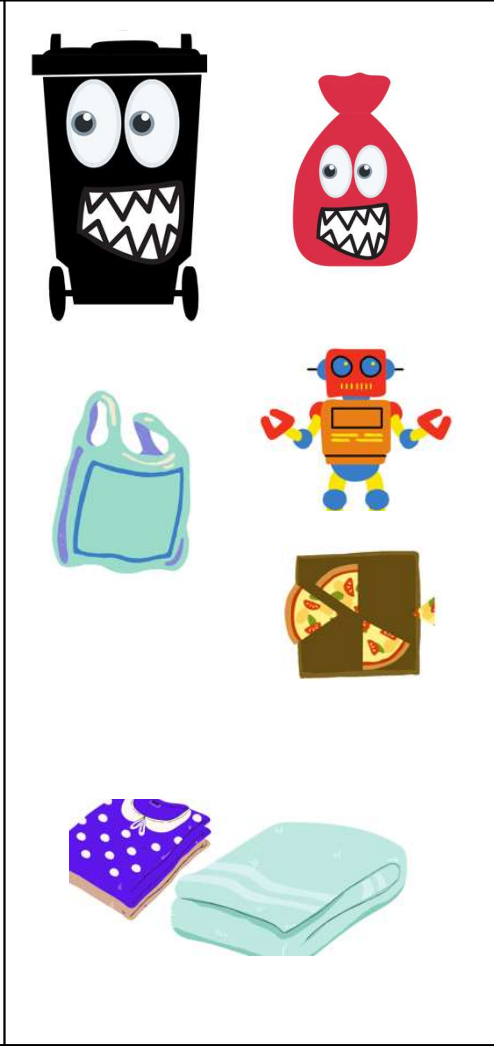


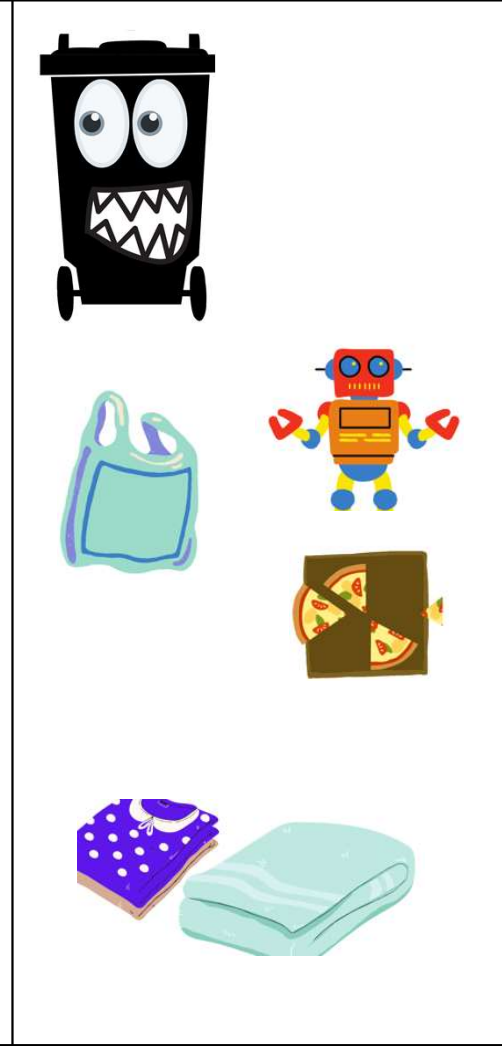


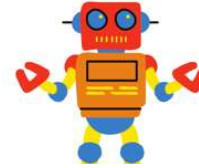












WHAT HAPPENS TO OUR RUBBISH?



Non-recyclable items to the Energy from Waste plant



Paper and card goes to a paper mill in Kings Lynn



All other recyclables go to a Materials Recovery Facility where they are separated

LET'S GET SORTING



WORKING IN WASTE

- **Refuse Loaders (Bin men and women!)**
- **Community Engagement**
- **Waste Managers**
- **Supply chain (processing the waste)**
- **Health and Safety Officer**
- **Recycling Centre Operative**



WHAT WE HAVE LEARNT TODAY

- WHY RUBBISH IS IMPORTANT
- REDUCE, REUSE, RECYCLE
- RIGHT THING, RIGHT BIN
- WHAT HAPPENS TO OUR RUBBISH
- CAREERS IN WASTE



DO YOU HAVE ANY QUESTIONS?