

An Evening with Lincolnshire Children's Hearing Services

Wednesday 25th May, 2022 from 6pm - 8pm.



An Evening with Lincolnshire Children's Hearing Services

6:00	Introduction and welcome	Lucy Holton
6:05	Children's Hearing Services Working Group (CHSWG)	Josie Pederson
6:10	National Deaf Children's Society (NDCS)	Martin Thacker
6.20	Lincolnshire Audiology Services	Sara Gibson
6.30	Newborn Hearing Screening	Megala Chandran
6.40	Sensory Education Support Team (SEST)	Suzanne Taylor
6.55	Lincolnshire BID Services	Jorja Le Gallienne
7:05	Children with Disabilities Team	Lizzie Wheelwright
7.15	0-19 team	Helen Hawsworth
7:25	Deaf Child and Adolescent Mental Health Service (CAMHS)	Robert Walker
7.35	Lincolnshire Sensory Services (LSS)	Jessica Hinson
7.45	Speech and Language Team	Suzanne Taylor
7:55	Close	Lucy Holton

The Local Engagement Team

- Work with local services to promote quality provision for deaf children, young people and their families
- Build networks with local service providers and families, and represent NDCS in local forums
- Engage deaf children, young people and their families to be involved with local services, decisions, reviews and taking positive action
- Challenge local services when issues arise, providing solutions to establish sustainable improvement to services
- Gather up to date information from local services to share with families

To contact the team please email: localengagement@ndcs.org.uk

The team work
with local
services across
the whole of
Great Britain
and the
Channel Islands

Newborn Hearing Screening Programme (NHSP)

*Megala Chandran
Newborn Hearing Screening Manager*



Aim of the programme

- Is offered to all the babies that are born in England ideally within the first 4-5 weeks of them being born
- Aim is to identify babies with permanent moderate, severe and profound deafness in one or both ears

Benefits of the screen

- Early identification gives these babies a better chance of developing language, speech and communication skills

Tests

- Screening always involves the Automated Otoacoustic Emmission (AOAE) test.
- Some babies also need a second test, the automated auditory brainstem response (AABR) test
- If the baby has spent more than 48 hours in NICU, then will receive both tests

AOAE and AABR

- The AOAE test involves placing a small soft-tipped earpiece in the baby's ear, after which gentle clicking sounds are played. The ear response is picked up by the screening equipment. The AOAE test takes just a few minutes.
- The AABR test involves placing 3 small sensors on the baby's forehead, nape of neck and shoulder. Soft headphones are placed over the baby's ears and gentle clicking sounds are played. The AABR test takes between 5 and 15 minutes.

Number of Referrals and Confirmed PCHI – 2021

- Total Referrals – 238
- Unilateral Referral – 168
 - Confirmed PCHI - 6
- Bilateral Referral – 70
 - Confirmed PCHI - 7

THANK YOU !!

The Sensory Education and Support Team

SEST

BS_SEND@lincolnshire.gov.uk

SES Team

Strategic Lead
1 Senior Teacher

Hearing

1 Lead teacher

8 Teachers of the Deaf (QTHI/ToD)

Vision

1 Lead teacher

6 Teachers of Vision Impaired Children (QTVI)

1 Resource and Technical Officer

1 Habilitation Officer

Multi-sensory

2 Teachers of Multi-Sensory Impaired Children (QTMSI)

Teaching assistant support

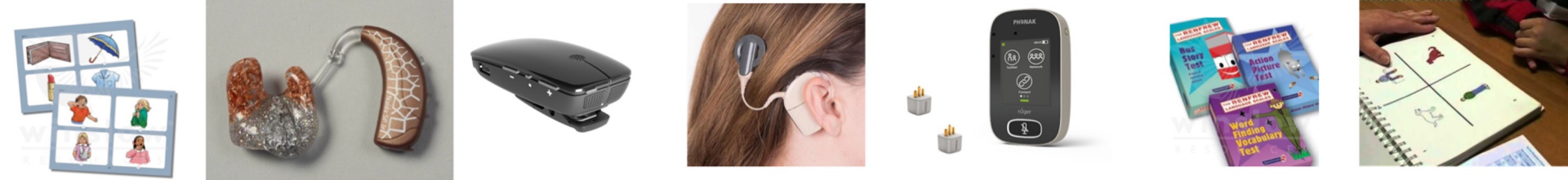
2 specialist teaching assistants for preschool children (VI/HI/MSI)

2 specialist teaching assistants for school aged children (VI/HI/MSI)

Referrals can be made by:

- Parents
- Newborn hearing screening programme
- Hospitals (audiology/ENT)
- Health Visitors
- Nursery or pre-school setting
- School

Children and young people should have a confirmed hearing loss before being referred.



What do specialist Teachers of the Deaf do?

We focus on:

- Consistent technology use (hearing aids/cochlear implants/Bahas/radio aids)
- Developing language and communication, monitor progress (standardised language assessments/observations)
- Access to education (including leading on education, health and care needs assessments)
- Training teachers, support staff, health visitors, Sencos
- Supporting parental understanding and offering information
- Promoting independence
- Supporting social and emotional development



We work closely with:

- Families; parents, carers, siblings, grandparents
- Audiology professionals (including implant centres)
- Staff in Early years settings, schools, colleges
- Speech and language therapists
- Health visitors
- Local authority SEND staff
- And many other professionals



An Evening with Lincolnshire Children's Hearing Services

Social care
Children with Disabilities Team
Lizzi Wheelwright

THE CHILDREN ACT 1989

- All disabled children are regarded as children 'in need' for the purposes of Part 3 of the Children Act 1989 (see sections 17(10)(c) and (11))
- A child 'in need' may receive services from the Local Authority but has no individual right to them – see the judgment of the House of Lords in *R (G) v Barnet LBC* [2004] 2 A.C. 208
- Statutory Assessments of disabled children are governed by statutory guidance, *Working Together to Safeguard Children 2015*.
- When disabled children are referred to children's social care services a decision on an appropriate assessment process should be made. This may range from consideration as to how their needs may be met by the local offer or through an Early Help assessment, to a S.17 Child in Need or S. 47 Child Protection assessment.
- The guide to inter-agency working to safeguard and promote the welfare of children *Working Together to Safeguard Children 2015* states that where services are to be provided (or a direct payment made) under S17 of the Children Act 1989 to a disabled child there should be a child in need plan setting out 'what services are to be delivered, and what actions are to be undertaken, by whom and for what purpose' (paragraph 50, p22).

Universal Provision

- Lincolnshire County Council is committed to ensuring children with disabilities and/or sensory impairments can access positive experiences and families can get the support they need within universal provision.
- The majority of children in Lincolnshire who require services will receive them through universal provision within their local community. The same should be true of any child with a disability.
- Universal provision, for example, sports clubs, youth clubs, libraries and children's centers are really important in ensuring children and young people with disabilities have fun and enjoy themselves with friends, just like all children and young people.



Our Principles

- Disabled children and young people should enjoy the same rights and opportunities as other children.
- All disabled children and young people have the right to be heard and the opportunity to actively participate in decision-making.
- The views of children and young people are vital to the development of services
- All children to be safeguarded

Children with Disabilities Social Care Core Offer

- Responsibility for the assessment of need for children with severe and profound disabilities
- Covers all aspect of statutory work from Child in Need, Child Protection and Care Proceedings and Looked After Children
- Long term work with children and families
- Social Workers work wherever possible to localities
- Offer Duty Social Worker s17 and s47 (Child Protection)

Early intervention support and prevention

Our aim is to help build resilience within families ,to support them to care for their children and to remain in their community

Assessments that are outcome focused and look at long term planning and transition.

Recognition of impact for carers

Preparation for adulthood

Sources of support

- Kids Services- KIDS has been commissioned by Lincolnshire County Council to deliver Targeted Positive Activity; holiday clubs and early learning provision to children with disabilities across the whole county of Lincolnshire. <https://www.kids.org.uk/lincolnshire-positive-activities>
- KIDS also have been commissioned by Lincolnshire County Council to deliver Early Support and Learning Provision sessions for disabled children and those with complex health needs across the county <https://www.kids.org.uk/lincolnshire#:~:text=KIDS%20have%20been%20commissioned%20by,health%20needs%20across%20the%20county>.
- Carers Assessments- is for someone who looks after a relative or child who is frail, disabled or seriously ill. It is a friendly conversation with someone who understands the caring role. It's an opportunity to consider your own wellbeing and your own needs, and to think about what support you might need <https://www.lincolnshire.gov.uk/support-carers/request-carers-assessment/3>

SEND Local Offer

The Local Offer brings together information for children and young people with special educational needs and disabilities and their families.



You can find out information on:

- Support with education
- SEND and EHCPs
- Early Years and child care advice
- Health services
- Wellbeing advice
- Holiday Activities and Food Programme

Early Help Service

- Early Help Workers work directly with parents and carers as well as children and young people on a one-to-one and group basis; using evidence-based interventions.
- Responsible for the completion of Child & Family Assessments and being Lead Professional for Team Around the Child cases where relevant.
- Provide a range of parenting programme targeted at young people who have additional needs.
- Young Carers Groups- The Lincolnshire Young Carers Service supports young carers up to the age of 19. Young carers may be helping and supporting a family member or friend due to disability, mental ill-health, illness or substance misuse.

<https://www.lincolnshire.gov.uk/support-carers/young-carers/2>

Early Support Care Co-ordination

- ESCO aims to raise the standards of care for children and young people, aged 0-18 years. Who have significant and complex needs and require targeted coordination of services.
- ESCO helps to identify children's needs and respond in the right way. It aims to ensure that the child, young person and their family feel more in control.
- The Early Support Care Co-ordination (ESCO) team provides virtual drop in appointments. These are an opportunity to meet an ESCO Keyworker for a one hour session to discuss services and support available.

<https://lincolnshire.fsd.org.uk/kb5/lincs/fsd/service.page?id=scoyyvENRuA>

Short Breaks

Children and young people are offered enjoyable experiences away from their primary carers to enhance their personal and social development, while parents and families are provided either with a valuable break from their caring responsibilities, or help accessing the community with the child or young person .

<https://www.lincolnshire.gov.uk/wellbeing-advice/short-breaks>

Every-One on behalf of Lincolnshire County Council are offering subsidised short breaks for families with a child or young person up to the age of 25 with a disability in one of the adapted caravans based at Butlin's Skegness.

https://lincolnshire.fsd.org.uk/kb5/lincs/fsd/service.page?id=aeleLX1UcJw&familychannel=2_5

The Thomas Centre- Provide overnight self-catering short breaks for children and young people who have Autism and complex needs, and their families. The Thomas Centre is a safe environment and non-judgmental.

http://search3.openobjects.com/kb5/lincs/fsd/service.page?id=JsXZq7Ly4YE&familychannel=2_3

Childrens Health 0-19 services



Health Visitors

- Offer support from the antenatal period until year one of school, universally at:
- 10-14 days
- 6-8 weeks
- 3-4 months
- 8-12 months
- 2 -2.5yrs
- According to need, they can support flexibly within these formal reviews and beyond.

- Areas covered at contacts include: child development, safety, feeding, parental mental health, immunisations, dental health and family support.
- In partnership with parents and carers we can tailor programmes to support with behaviour, sleep, autism and toileting, alongside other requests.
- We work closely with Community Childrens Nurses where there are complex health needs.
- We use interpreters and translation services to meet the needs of our diverse population across Lincolnshire, including hearing loss.

Single point of access

We offer a duty health visitor service.

Calls which come into the Childrens Health Hub are allocated to a duty worker and returned within 24hrs.

This operates Monday to Friday 09.00-17.00

We operate a text messaging system which now sends appointment reminders out to families.

Children and Young Peoples Nurses

- Offer support to children from Year One to 19 years (25 SEND), predominantly with toileting skills and any long term need for continence products
- Support with any outstanding Health needs which are not covered by other health professionals.
- Support EHC plans and transition to adult services

Childrens Continence Nurses

- The service support children who are suffering with chronic constipation following assessment where interventions by Health Visitor or the Children's and Young People nurses have not worked.
- Day time wetting when a child has been dry in the day over the age of 3 years and 6 months but has started to wet in the day. The nurses are able to complete bladder scans to estimate the volume of the bladder and assess any retention and offer voiding techniques and assess for provision of aids and equipment.

Childrens Continence Nurses

Night time wetting (enuresis). If a child requires support following assessment and support from HV or CYPN, they can be referred for desmopressin for children over 5 years

Deaf Young People and Mental Health

*Dr Rob Walker, Consultant Child and Adolescent Psychiatrist,
National Deaf CAMHS Central Region*



Deaf CAMHS

- Brief introduction to our service
- Why we need Deaf CAMHS
- What we do
- Where we work
- How we work – team members, who we work with and how to refer



Why do we need Deaf CAMHS

- Higher rates of MH problems for deaf young people
- Poor access to local CAMHS
- Department for Education not Dept of Health identified the unmet need
- Pilot project in 2007 evaluated by SPRU York University – National Deaf CAMHS set up in 2009

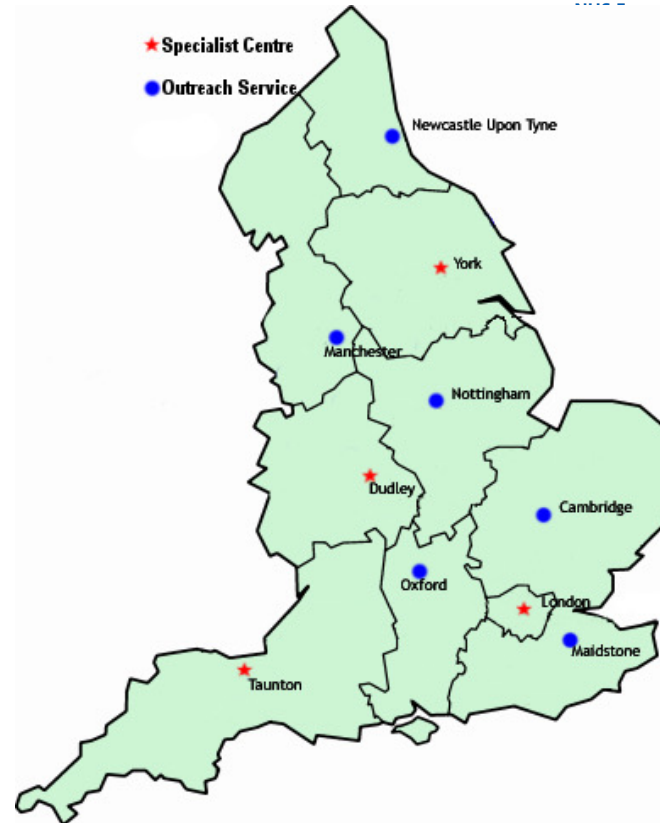


What do we do/Aims of Service

- Assessment & Treatment
- Co-working, Consultation & Training to other professionals and local CAMHS
- Prevention - promoting positive mental health



We cover West and East Midlands and South Central regions and we have bases in Dudley, Nottingham and Oxford.



Staffing/Who works for deaf CAMHS

- Specialist Deaf Outreach Worker/Family support workers
- Psychiatrists
- Psychologists
- Nurses
- OT
- Family therapist/play therapist
- Interpreters
- Admin
- SALT/Social Worker – not at the moment



Who we work with and How to make Referrals

- Referral through professional – GP/SW/TOD/Local CAMHS etc (no self referral)
- **Referral Criteria:**
 - A significant mental health condition or significant emotional/behavioural concerns.
 - **AND**
 - A severe or profound hearing level
 - **OR**
 - BSL as their preferred/first language
 - **OR**
 - Mild/moderate hearing level associated with significant problems with



Prevention/Promoting Positive Mental Health

- Communication – promote all means of communication including sign/BSL
- Early assessment/consultation regarding any emotional/behavioural concerns



Questions...?

bchft.deafcamhs@nhs.net



Lincolnshire Sensory Services

Address: Wellingore Hall, Hall Street, Wellingore, Lincoln, LN5 0HX

Tel: 03333 202667 **Mobile/Text:** 07710 155104

Email: contact@lincolnshiresensoryservices.org.uk

Website: www.lincolnshiresensoryservices.org.uk

We offer;
Family support,
Support with Benefits such as DLA/ Carers Allowance,
Family fund/ Grants,
Working with the SEST team,
Signposting to other appropriate organisations such as Lincolnshire Fire & Rescue Service and Chance to Meet,
Specialist Equipment,
Information and advice about Deafness and hearing loss.

Speech and Language Therapy

The team of Specialist Speech and Language Therapists:

- Georgie Hall
- Claire Chorlton
- Anne-Marie Marley (currently on Maternity leave)

What we do:

- We support children with a hearing loss to develop language and/or communication skills.
- We work closely with families and with other professionals that support the children on our caseload.
- We review our caseload either every 2-3 months or 4-5 months, depending on the child's individual need and the progress they are making.



Who we see...

Pre-school aged children:

- Children with a bilateral severe - profound hearing loss and ANSD.
- Children with a unilateral hearing loss or children with a bilateral mild-moderate hearing loss who are not making expected progress and require some additional support from our service. These children may sometimes be seen for an assessment with our team before returning to our other team of Speech and Language Therapists.

School aged children:

- If a child has recently moved into Lincolnshire, they may be seen by our specialist service initially, before continuing support from our other team of Speech and Language Therapists
- When a child's progress would benefit from close monitoring from our Specialist Service.
- If a member of our Speech and Language Therapy team has requested support from our specialist team to support assessment and/or intervention.



Where will we see you...

- We usually see children initially in clinic as this is an easy way to get lots of information from parents/guardians.
- We can also see children in nursery/school settings.
- We can see children at home if that's the most appropriate place or if parents/guardians find it difficult to travel to a clinic and the child is not in nursery/school.
- We also often do joint visits with SEST as we work closely with them.



Referring into our service...

- The Speech and Language Therapy service is an open referral system which means that anyone can refer to us.
- Parents are welcome to contact us to refer their child.
- Nursery settings often refer into our service with parent/guardian's consent.
- Any professional working with families are able to refer into our service with consent from parents/guardians.
- SEST are able to refer into the Speech and Language Therapy Service with consent from parent/guardians.



Our contact details

For referrals into our service, please either ring or email us:

Tel: 01522 309025

LHNT.child-therapy-referrals@nhs.net

**If you have any questions at all, please contact me via the following email address:
lhnt.lincschildrentherapyservice@nhs.net**



An Evening with Lincolnshire Children's Hearing Services

For any further information please contact:

Lucy Holton (Parent Representative & Vice Chair of Lincolnshire CHSWG)

lucy.holton@mail.com

Text: 07725131495