

Slide 1

L.E.A.D.
Teaching School Hub
Lincolnshire

Lincolnshire
Hub Partner

Teaching School Hub Lincolnshire

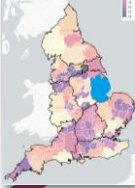
Managing the changes together...

Working Together, achieving the Highest Outcomes for All

Slide 2

Teaching School Hubs

- 87 nationally designated Teaching School Hubs
- Rigorous application process
- There is national coverage
- To formally begin operation from September 2021
- Teaching Schools will cease to be formally designated from September 2021 (approx. 775 nationally)
- Witham St Hughs Academy holds the formal designation for the Teaching School Hub in Lincolnshire.
- There is a separate designation for N/N.E Lincolnshire



Working Together, achieving the Highest Outcomes for All

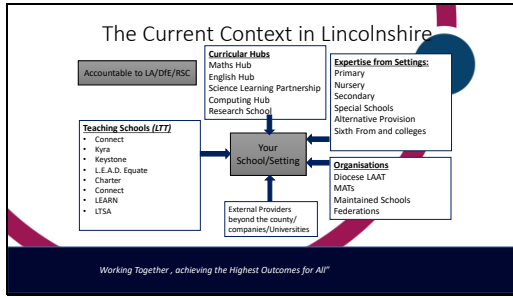
Slide 3

Why the change?

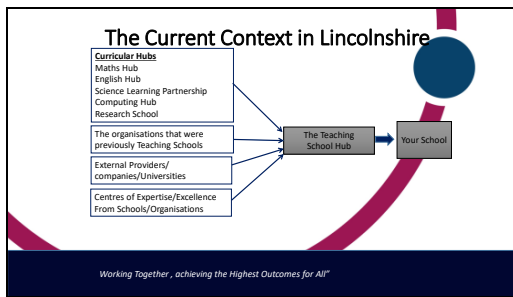
- Recruitment and Retention Strategy(2019)
"there are no great schools without great teachers. The key to education is the person at the front of the classroom. At a time when there are more pupils in our schools than ever before, we need to be attracting and keeping great people in teaching"
- Ease for schools in accessing an offer avoiding duplication and variation in quality
- The opportunity for schools to benefit from the best expertise in the system, underpinned by research

Working Together, achieving the Highest Outcomes for All

Slide 4



Slide 5



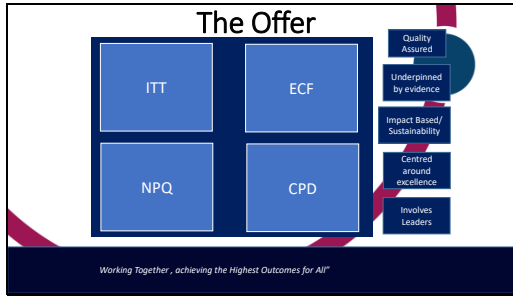
Slide 6

Teaching School Hub Role

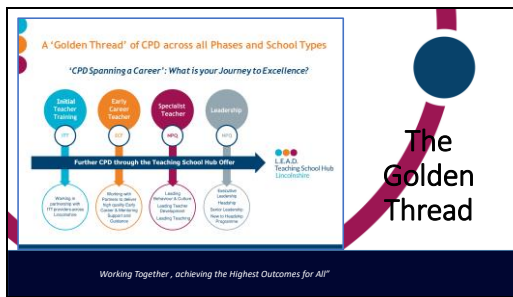
“The Teaching School Hub’s core functions are to: support schools and trusts to invest in their workforce, in order to grow, recruit, develop and retain the very best teachers, support staff and leaders. We will achieve this through a coherent place based approach to delivering and signposting to high quality progressive teacher development.”

Working Together, achieving the Highest Outcomes for All

Slide 7



Slide 8



Slide 9



Slide 10

NPQs


	Area	Aspect
Specialist NPQs	Specialist NPQ in Leading Behaviour & Culture	This is for teachers who may have responsibility for leading behaviour (MFL) support staff within a their school.
	Specialist NPQ in Leading Teacher Development	This is for teachers who may have responsibility for leading the development of other teachers in their school. They may have responsibilities for the development of teacher mentors, school or specialist mentors who are early in their career.
	Specialist NPQ in Leading Teaching (Subject Curriculum)	This is for teachers who may have responsibility for leading teaching in a subject, year group, key stage or phase.
Leadership NPQs	Leadership NPQ Senior Leader	This qualification is for leaders that are or are aspiring to be a senior leader with cross school responsibilities.
	Leadership NPQ Headteacher	This is for headteachers or an equivalent role in a head teacher or head of school with responsibility for leading a school.
	Leadership NPQ Executive Leadership	This qualification is for leaders that are or are aspiring to be an executive or MAT CEO role with responsibility for leading several schools.

Working Together, achieving the Highest Outcomes for All!

Slide 11

CPD

- Improving and evaluating pupil outcomes
- Robust evidence and expertise
- Collaboration and expert challenge
- Sustained over time
- Prioritised by school leadership



Working Together, achieving the Highest Outcomes for All!

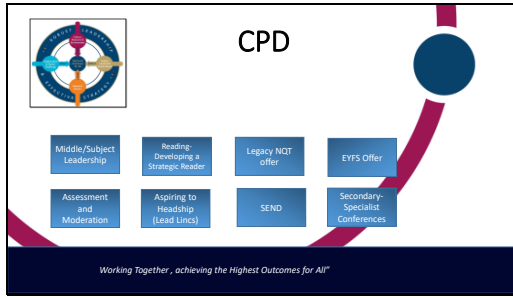
Slide 12

Curriculum Hubs



Working Together, achieving the Highest Outcomes for All!

Slide 13



CPD

Middle Subject Leadership

Reading: Developing a Strategic Reader

Legacy NQT offer

EYFS Offer

Assessment and Moderation

Applying to Headship (Lead Lines)

SEND

Secondary Specialist Conferences

Working Together, achieving the Highest Outcomes for All

Slide 14



The Website

Your Headline Here

Our Services

- ITT: Initial Teacher Training
- CPD: Continue Professional Development
- AB and ECF: Early Career and Appropriate Body Services
- NPG: Leadership Qualifications

Working Together, achieving the Highest Outcomes for All

Slide 15



Contact Us

@leadequatetsa

admin@equatetsa.co.uk

Working Together, achieving the Highest Outcomes for All
