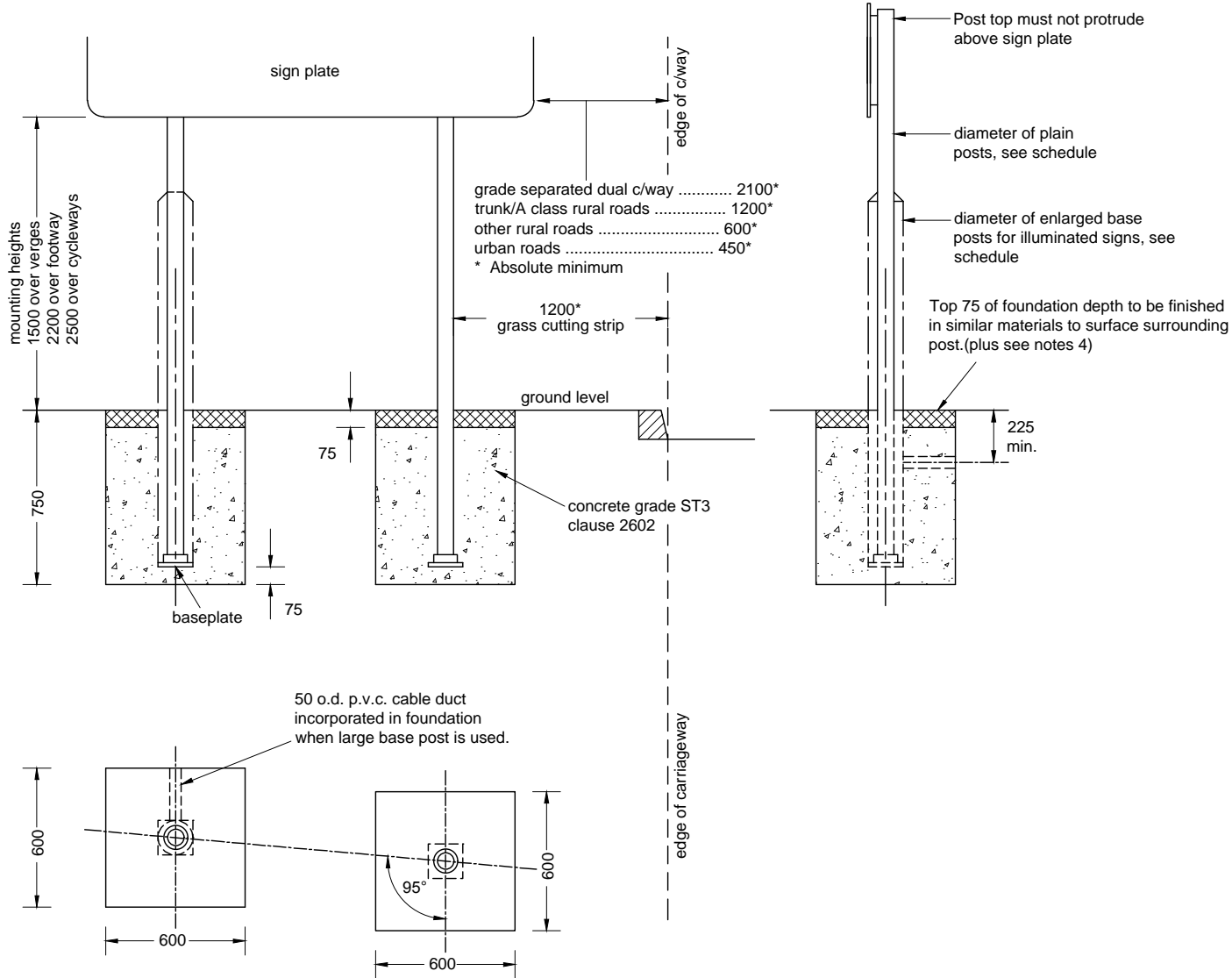


Notes

1. For sign face areas up to 2m².
2. Special mounting heights where Diag. 515/606 are sited on roundabouts and where Diag 515 is sited elsewhere.
3. Number and diameter of posts. See schedule.
4. Posts for illuminated signs situated in verges to have concrete surface as SD/14/2A.



This is a typical detail and may require conversion to a full scheme specific drawing.

NOT TO SCALE
(all units in millimetres)

Disclaimer : Before making use of this detail, any designer or third party must ensure that it satisfies all requirements of the scheme to which it is being applied. Lincolnshire County Council accept no responsibility for third party use of this Standard Detail.

Rev: AMENDMENT DETAILS Date: Description: Approved by:

Lincolnshire
COUNTY COUNCIL

Checked by: GP Approved by: SB

ISSUED 12/05/17

Foundation 'B'
Small Sign on Twin Posts

SD/12/2
Standard Detail Number

Revision Number

SD/12/2

Revision