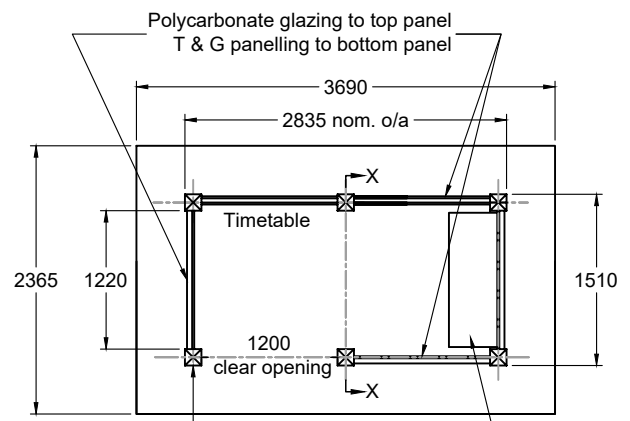
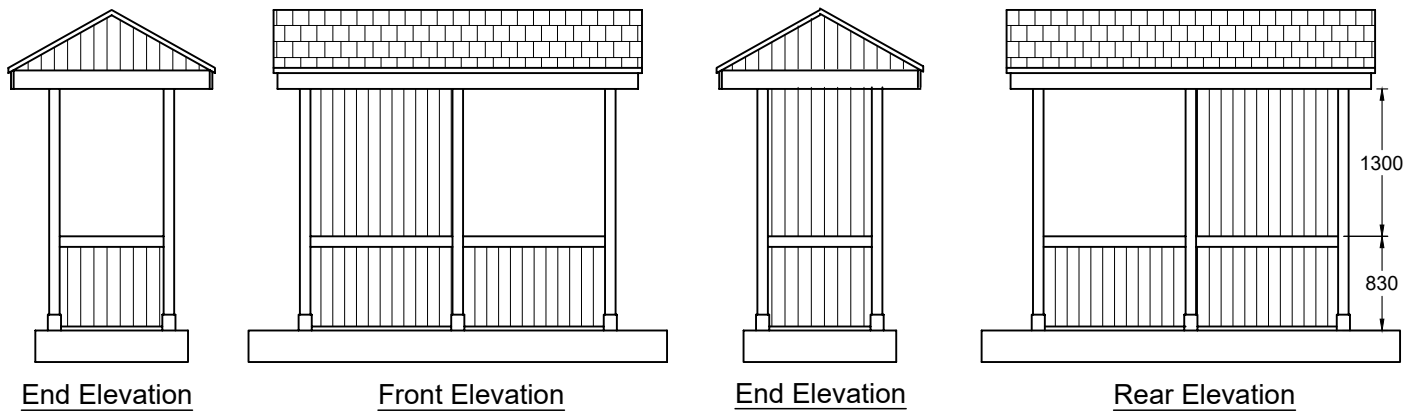


Notes

1. Shelter foundations to be laid at 1:50 gradient. Shelter to be erected vertically.



Polycarbonate glazing to top panel
T & G panelling to bottom panel

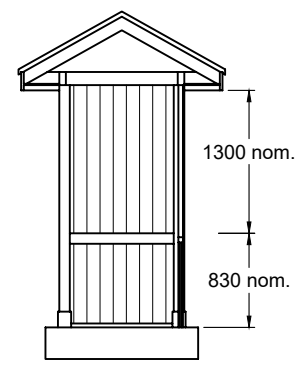
Timetable

1200 clear opening

Timber posts with galvanised steel shoes cast into slab.

New bench to be fitted on 3 No. vertical pattresses between bottom and middle rail and supported using 3 No. steel brackets.

General Plan



Section X-X

Rev:	Date:	Description:	Approved by:
AMENDMENT DETAILS			



Checked by:	GP	Approved by:	SB
-------------	----	--------------	----

ISSUED 12/05/17

Rural Shelter
Type C
Disabled Access

This is a typical detail and may require conversion to a full scheme specific drawing.

NOT TO SCALE
(all units in millimetres)

Disclaimer : Before making use of this detail, any designer or third party must ensure that it satisfies all requirements of the scheme to which it is being applied. Lincolnshire County Council accept no responsibility for third party use of this Standard Detail.

SD/11/29C
Standard Detail Number

Revision Number