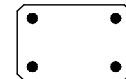
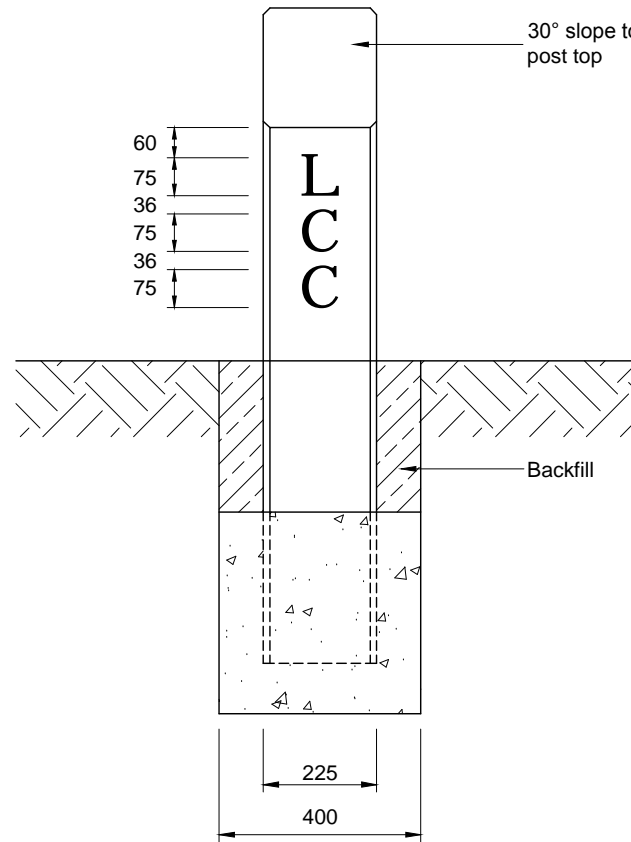
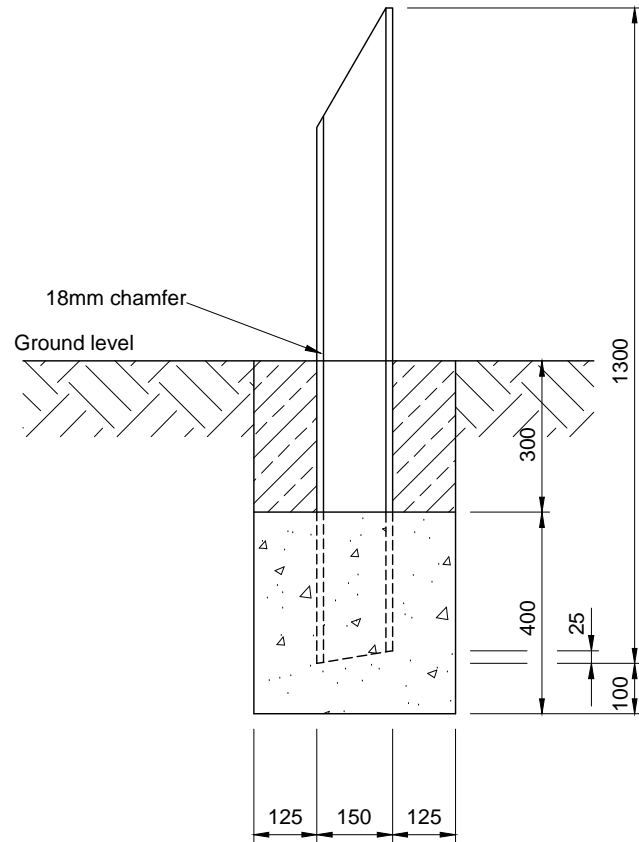


Notes

1. Posts to be reinforced with 4 No. 12mmØ mild steel bars.
2. Bottom of posts to be set in grade ST3 concrete to Clause 2602
3. Letters to be cast into post to a depth to a depth of 10mm
4. Precast concrete posts to BS 7263 Part 1.
5. Minimum cover to steel 25mm



Rev:	Date:	Description:	Approved by:
AMENDMENT DETAILS			



Checked by:	GP	Approved by:	SB
-------------	----	--------------	----

ISSUED 12/05/17

Concrete Boundary Post

This is a typical detail and may require conversion to a full scheme specific drawing.

NOT TO SCALE
(all units in millimetres)

Disclaimer : Before making use of this detail, any designer or third party must ensure that it satisfies all requirements of the scheme to which it is being applied. Lincolnshire County Council accept no responsibility for third party use of this Standard Detail.

SD/3/4
Standard Detail Number

Revision Number