

Notes

1. All dimensions are given in millimetres.
2. For planted root Feeder Pillars the depth of the concrete foundation shall be 150 greater than the depth of the Feeder Pillar root. (Subject to a minimum of 500).
3. All cable entries shall be sealed with duct sealant.
4. Duct entry layout may be altered to suit cabling arrangements.
5. One spare duct with draw rope shall be installed for future use and indicated with a duct marker block.
6. Unless shown otherwise all ducts shall be 100Ø thick walled high density smooth bore polyethylene. Wall thickness shall not be less than 5mm. Duct for incoming Electricity Company cable shall be manufactured in black polyethylene. Duct for outgoing lighting cables shall be manufactured in orange polyethylene.
7. Ducts shall extend 500 min from foundation / base.
8. Foundation to be constructed with mix ST3 concrete as described in Clause 2602.
9. Feeder pillar sited remote from a surfaced footway or carriageway shall be provided with a concrete walkway 1 metre wide.
10. Group Switching Column to be 6 metre Raise and Lower Type.

Rev:	Date:	Description:	Approved by:
AMENDMENT DETAILS			

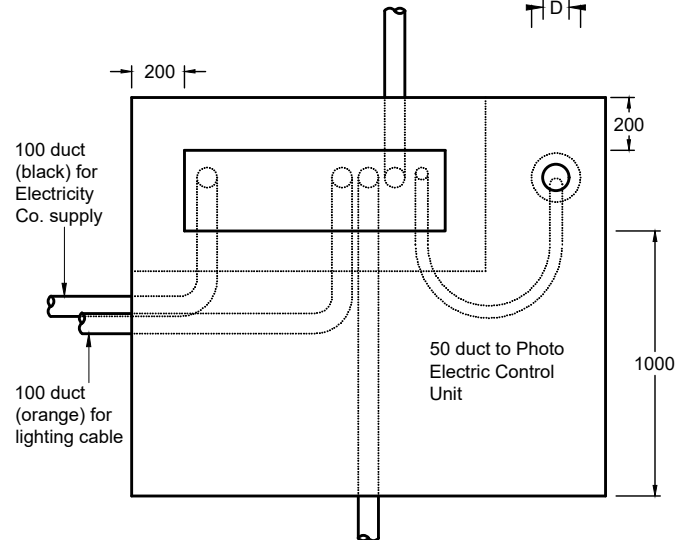
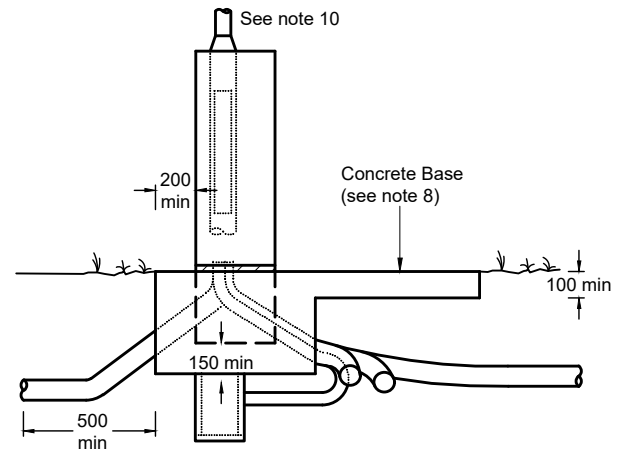
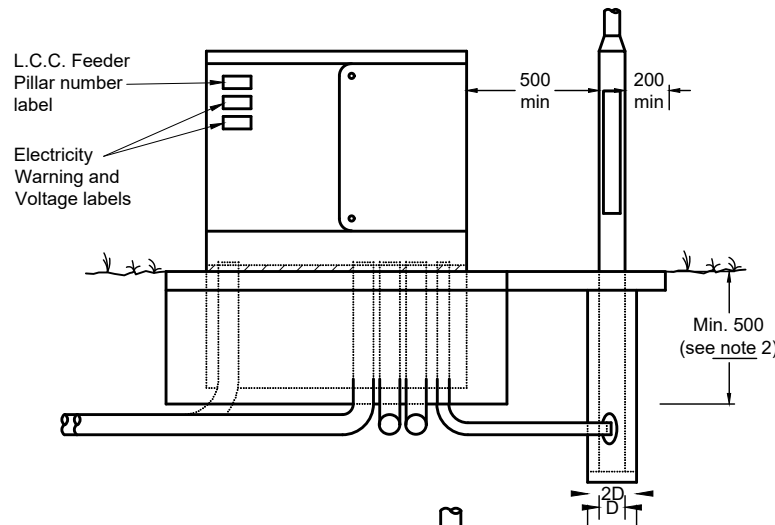


Checked by:	PC	Approved by:	SB
-------------	----	--------------	----

ISSUED	02/12/14
--------	----------

Feeder Pillar &
Group Switching Column
Foundation in Unsurfaced Surround

SD/14/1C	Revision Number
----------	-----------------



This is a typical detail and may require conversion to a full scheme specific drawing.

NOT TO SCALE
(all units in millimetres)

Disclaimer : Before making use of this detail, any designer or third party must ensure that it satisfies all requirements of the scheme to which it is being applied. Lincolnshire County Council accept no responsibility for third party use of this Standard Detail.

Revision