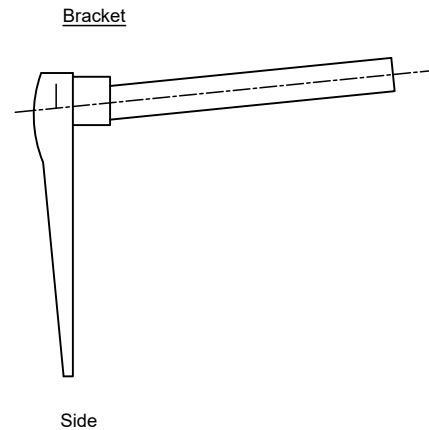
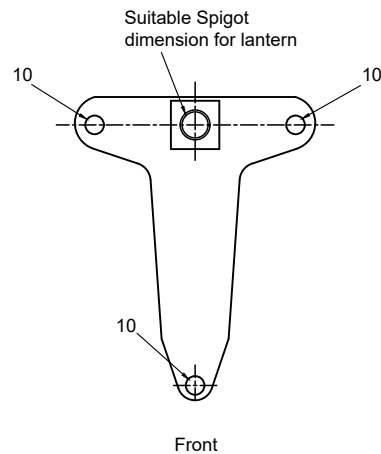
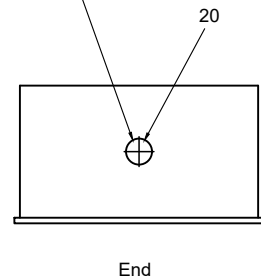


Min. I.P. Rating of box and cable gland: I.P. 65



Notes

- Service boxes shall:-
Have an 8mm earth stud fixed to the inside of the box.
Have a full length wooden board fixed to the back of the box.
Be constructed from galvanised mild steel to BS EN ISO 1461 or heavy gauge fire retardant G.R.P.
Be fixed in accordance with the manufacturer's instructions.
- Brackets shall:-
Have bracket arms with a 5 degree uplift unless otherwise specified.
Have support stays for brackets in excess of 1m.
Have a 20mm diameter entry hole in the bracket - cable gland to maintain I.P. 65.
Have spigots of suitable dimension for the lantern to be installed.
- Combination boxes (Service box and bracket unit) may be used subject to approval of overseeing authority.
- Flexible cord may be used to supply lantern depending on suitability of bracket. Approval to be sought from overseeing authority.

Rev: AMENDMENT DETAILS Date: Description: Approved by:



Checked by:	PC	Approved by:	SB
		02/12/14	

Lantern Bracket & Wall Mounting Box Detail (Separate)

This is a typical detail and may require conversion to a full scheme specific drawing.

NOT TO SCALE
(all units in millimetres)

Disclaimer : Before making use of this detail, any designer or third party must ensure that it satisfies all requirements of the scheme to which it is being applied. Lincolnshire County Council accept no responsibility for third party use of this Standard Detail.

SD/14/3
Standard Detail Number

Revision Number