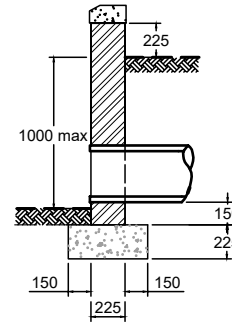
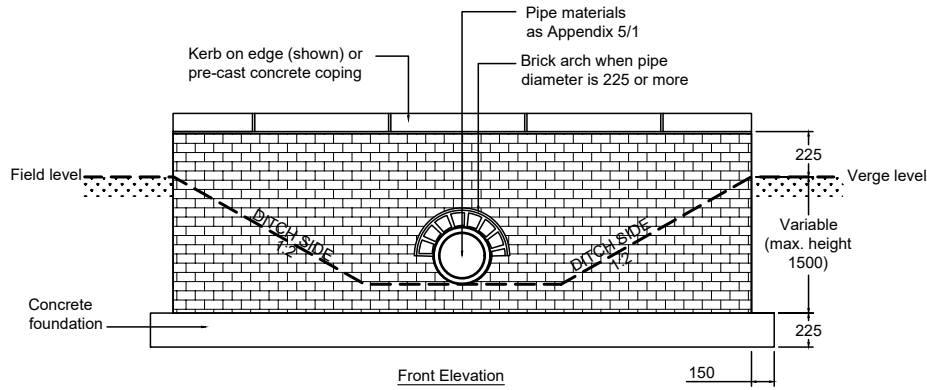


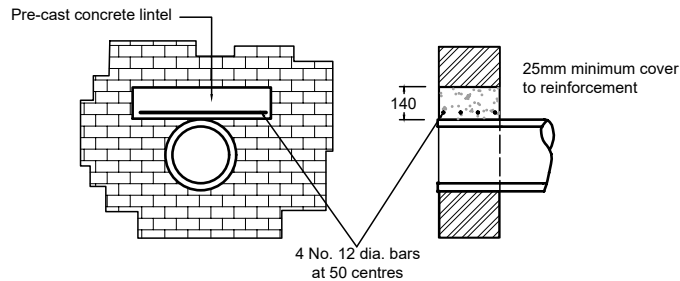
Notes

1. Brickwork to be "English Garden Wall" bond.
2. Foundation to be Grade ST3 concrete to Clause 2602.
3. Cold weather working to Clause 1710.
4. Bricks to be Class B Engineering bricks to BS EN 772-1, BS EN 772-3 & BS EN 772-7.
5. Mortar to be Class (i) to Clause 2404.

Clause numbers refer to the Specification for Highway Works (H.M.S.O 1986) and amendments.

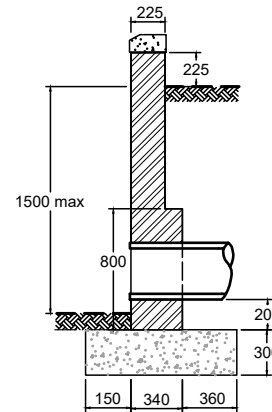


Section (for retained height up to 1.0m)



Concrete Lintel Protection to pipe of 225 diameter or more

(alternative to brick arch shown above)



Section (for retained height up to 1.5m)

Rev:	Date:	Description:	Approved by:
AMENDMENT DETAILS			



Checked by:	GP	Approved by:	SB
-------------	----	--------------	----

ISSUED 12/05/17

Brick Headwall

This is a typical detail and may require conversion to a full scheme specific drawing.

NOT TO SCALE
(all units in millimetres)

Disclaimer : Before making use of this detail, any designer or third party must ensure that it satisfies all requirements of the scheme to which it is being applied. Lincolnshire County Council accept no responsibility for third party use of this Standard Detail.

SD/5/7
Standard Detail Number

Revision Number