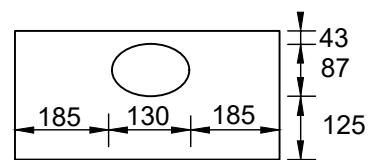


Cross Section



Front Elevation of the Top Block Showing Elliptical Drainage Inlet Opening

Notes

1. Concrete bed and backing to be ST3 concrete.
2. Mortar bed to be Class 1 to Clause 2404 thickness 10-20mm to Clause 1101.
3. Top block and base block 500mm in length.
4. Combined drainage and kerb block to comply with Clause 501.10.
5. Standard kerb face 110mm

Rev: AMENDMENT DETAILS Date: Description: Approved by:



Checked by: GP Approved by: SB

ISSUED 12/05/17

Combined Drainage & Kerb Block Type 1

This is a typical detail and may require conversion to a full scheme specific drawing.

NOT TO SCALE
(all units in millimetres)

Disclaimer : Before making use of this detail, any designer or third party must ensure that it satisfies all requirements of the scheme to which it is being applied. Lincolnshire County Council accept no responsibility for third party use of this Standard Detail.

SD/5/106
Standard Detail Number

Revision Number